

Vantage (v5.05.0) (Prentke Romich Company)

Writing with the Vantage Speech Generating Device

Introduction

The Vanguard, Vantage and Vantage Lite are a family of dedicated speech generating devices (SGD) from the Prentke Romich Company. Although these devices are no longer being manufactured, there are still quite a few of them in operation. These devices can serve as an external keyboard for a computer with either immediate or delayed input. Individuals can write with fewer keystrokes than typing and then send the text created to other computer programs. It is particularly beneficial for individuals who have emerging literacy skills but who can formulate messages using their SGD.

This tutorial assumes...

- The reader has one the Vantage family of devices and knows how to formulate a message.
- The reader has an available computer with word or picture processor software on it.
- The reader has a USB A/B cable (printer cable) for linking the two.
- The user knows how to save a document in the chosen word or picture processor.

Learning Objectives

Completion of this tutorial will give you experience with the following:

- Connecting one of the Vantage family of devices to a computer.
- Creating a message on one of the Vantage family of devices and sending it immediately to a word or picture processor.

Case Study

Colin is an 11 year student with severe dyspraxia of speech associated with autism. He is non-verbal and uses a Vantage Lite to communicate using the Unity 45 Sequenced user area. His messages range from 4-6 words in length and are usually grammatically correct. His fine motor skills for handwriting are very weak and the only word that is consistently legible is his name. He struggles to type as he has significant spelling challenges. His objective is to independently write a daily journal entry of at least four related sentences 4 out of 5 consecutive probes.

Select the Output Menu

1

Locate the Toolbox on the top of the device.

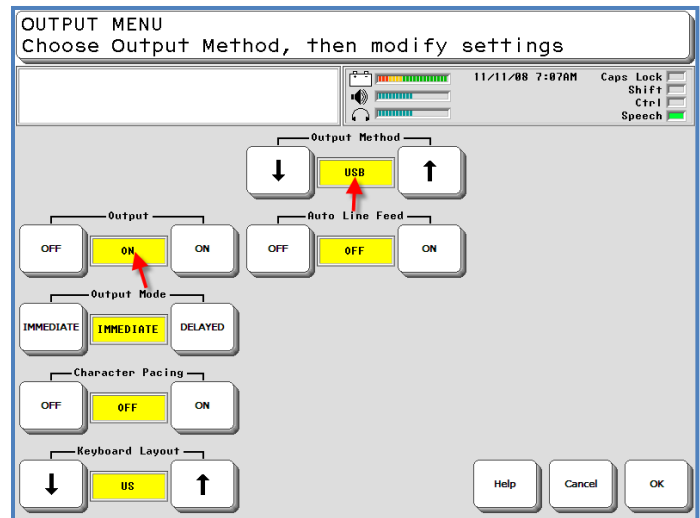
- **Go to** the Toolbox.
- **Select** Output Menu.



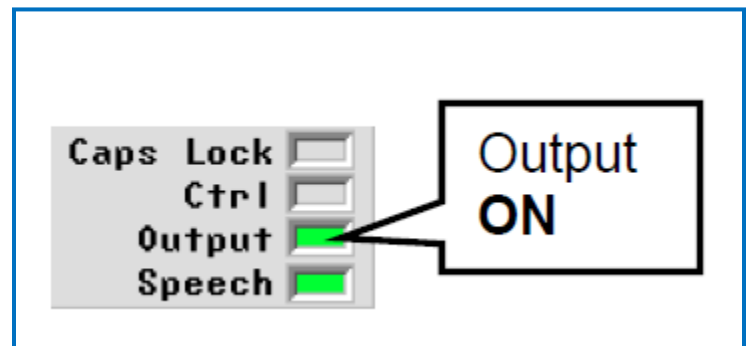
Make sure:

- Output is **ON**.
- Output method is set at **USB**.
- Output mode is set at **Immediate**.
- **Close** the Toolbox by selecting OK.

You will now see that Output light is green on the top of the device.



2



Connect the device to a computer

1

Connect the device to a computer using a USB A/B cable (same as a printer cable).

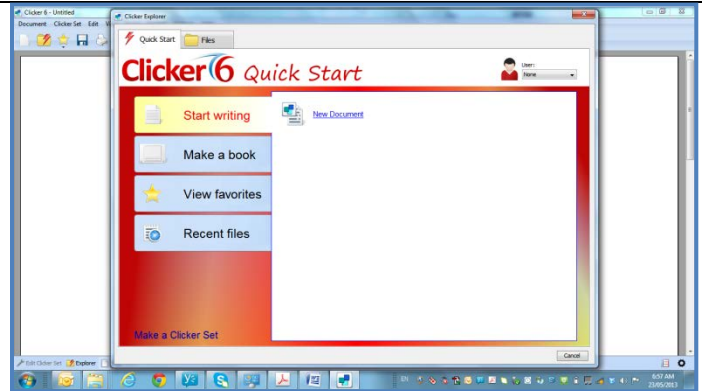
- **Insert** the small end to the device.
- **Insert** the larger end to the computer.



2

OR

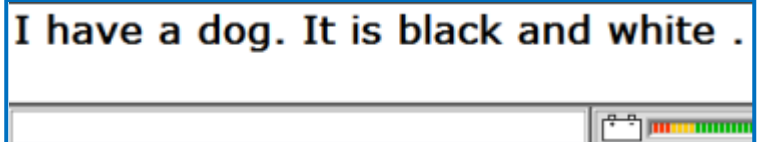
- **Open** a word processor such as WordPad or MS Word.
- **Open** a picture processor such as Clicker 6 or Boardmaker Studio with a symbolate window open.



Creating and Sending the Message

1

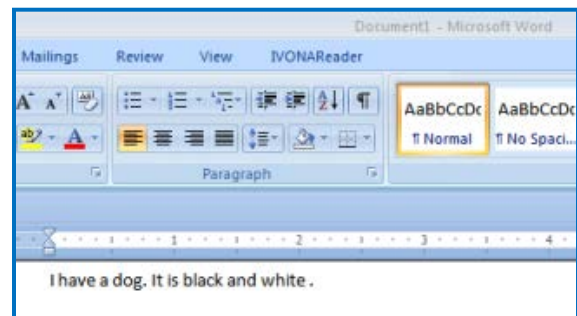
- **Formulate** a message on the device.





2

- It will be sent to your word processor.

OR



	<ul style="list-style-type: none"> • It will be sent to your picture processor if picture supports are required. 	
3	<ul style="list-style-type: none"> • Save your sent message in the word or picture processor. • Return to the Vantage. • Clear the message window. • Create another message on your Vantage to send. 	



Tip...

If you want to create longer content and store it in the Vantage to work on over a period of time and print it later in its entirety, you can do this in a Notebook. Notebooks can be accessed from the NOTEBOOK icon in the Activity Row or from the Notebook menu in the Toolbox.