



Boardmaker And Minspeak

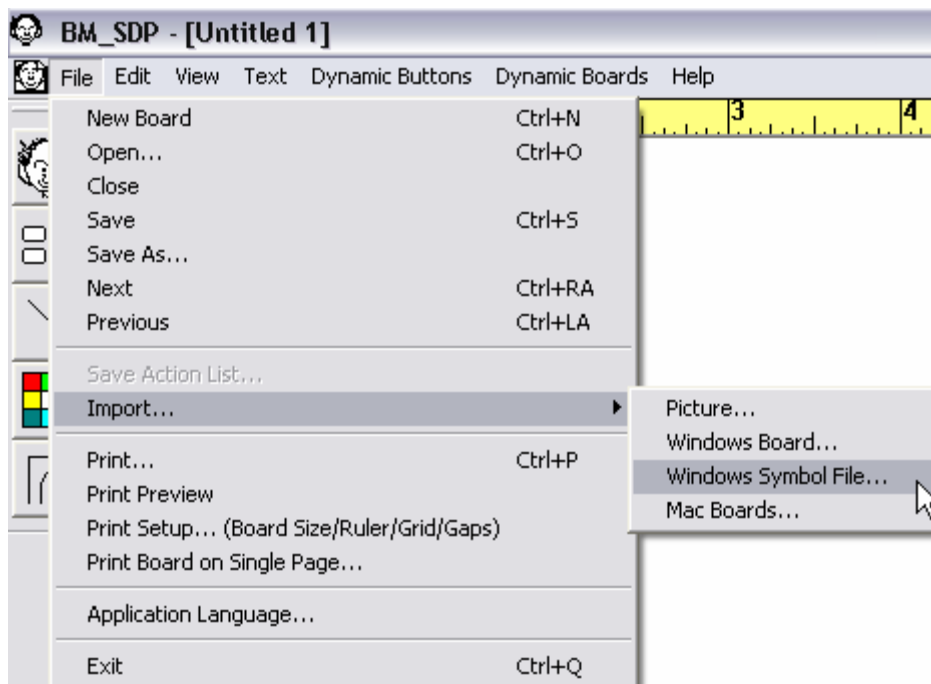
The PRC Symbol Set CD (Icons © 1997 Semantic Compaction Systems, USA)

The Minspeak Symbols are available on CD. However, since the Boardmaker CD will be occupying the CD drive, you will need to copy the contents of the PRC CD to your hard drive.

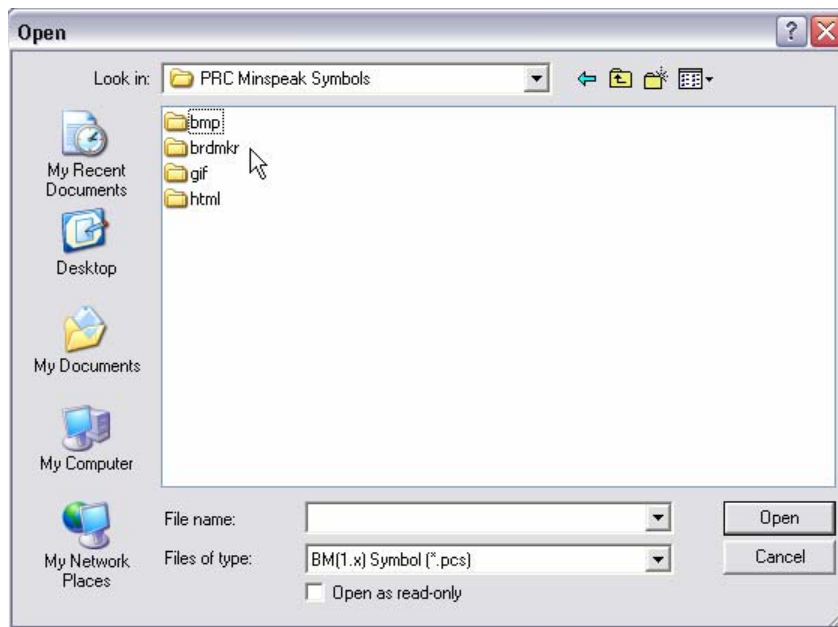
Importing the PRC Symbols to Boardmaker

Launch Boardmaker and open a new blank board.

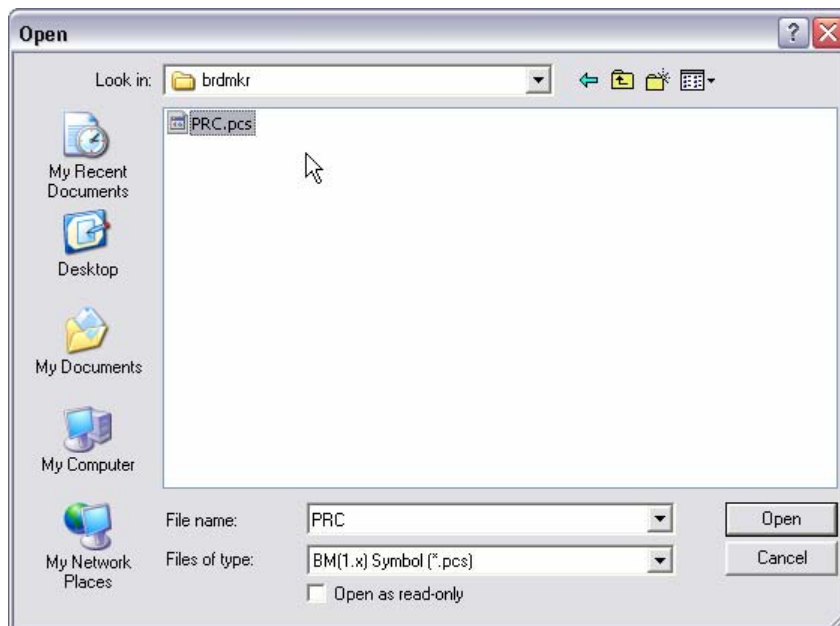
Under the File Menu, choose Import...Windows Symbol File...



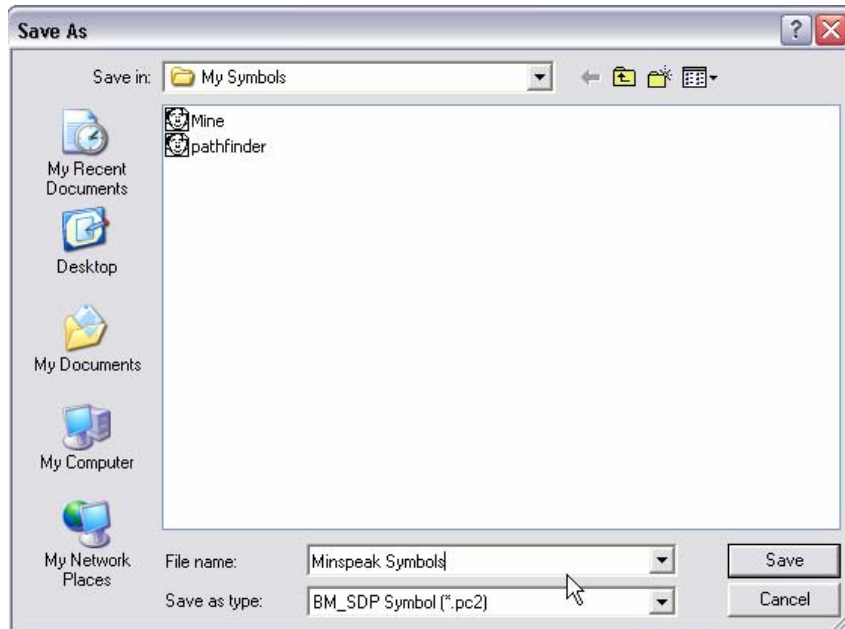
Navigate to the folder which contains the PRC symbols and choose the Boardmaker Folder. Click Open.



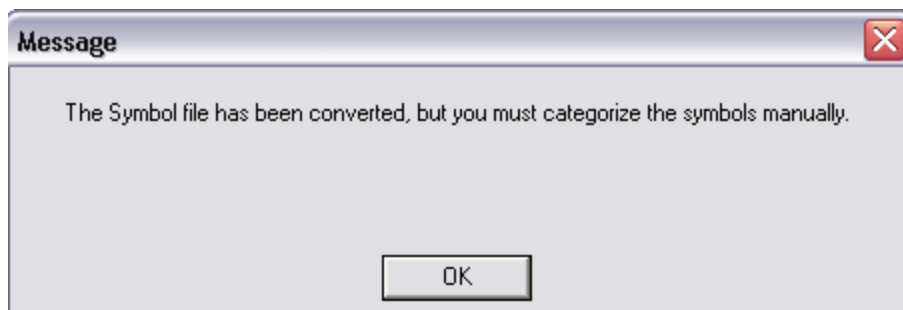
Choose the PRC symbol set and click Open.



Name the file and click Save. It will be stored with any other custom symbol sets you have imported.



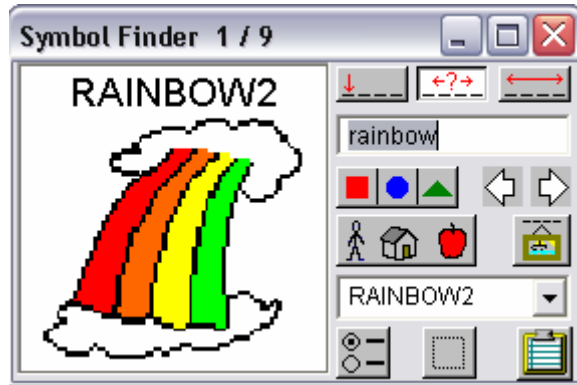
The pictures are saved to Boardmaker and you can search for them by name. However, to access them easily by category, you will have to assign each picture to a category.



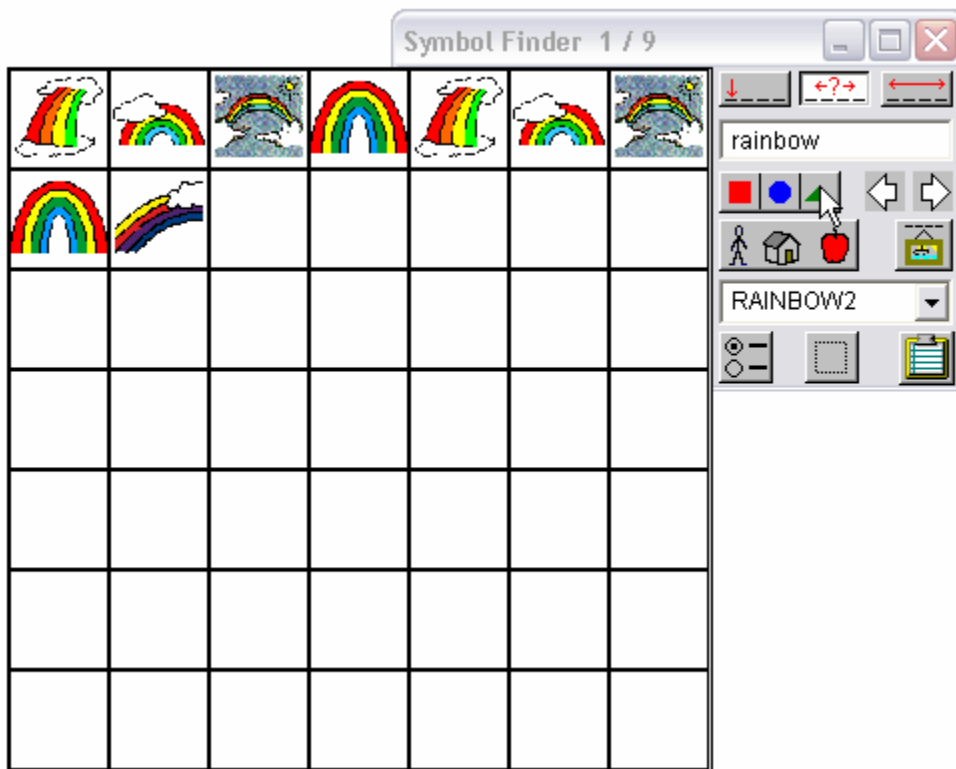
The number of symbols you classify depends on what you want to do with them. I wanted to create teaching materials for a student with a Pathfinder, so I wanted to have all 128 Unity symbols classified, and that took a little over an hour.

Finding the PRC symbols

Click on the Boardmaker icon to go to the Symbol Finder and type the word Rainbow.



Boardmaker finds 9 symbols. I've got some duplicates because I imported the set twice. (It's a long story, but avoid doing that if possible.) Click on the Thumbnails button to see all of the symbols which matched the search or use the arrow keys to scroll through all the choices. The PRC symbols are easy to identify, because they are not vector drawn and because they are labeled with all capital letters.



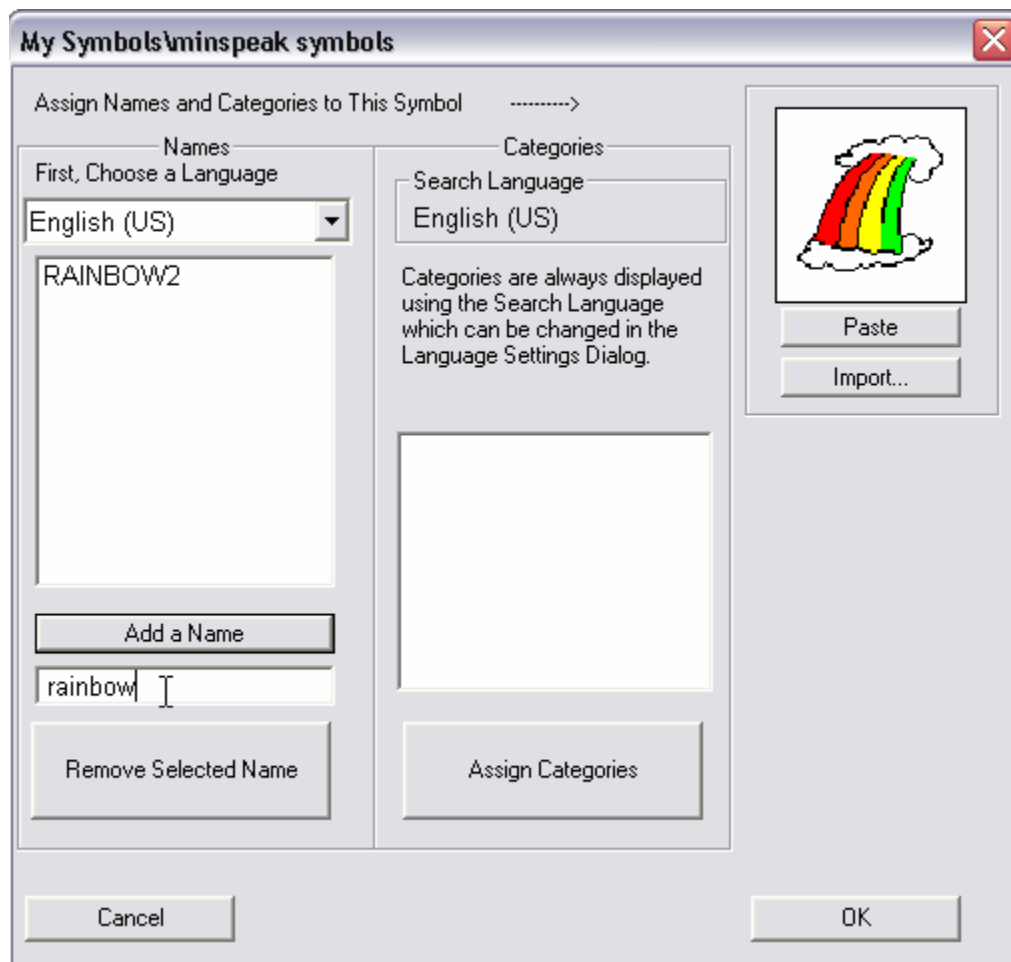
Choose the symbol which most closely matches the rainbow on your AAC device. Eight of the 9 symbols returned by this search appear to be PRC symbols. However, you don't need to classify them all.

Changing the Symbol Name

Once you have chosen the symbol, click on the picture icon to change the picture's name and assign a category.

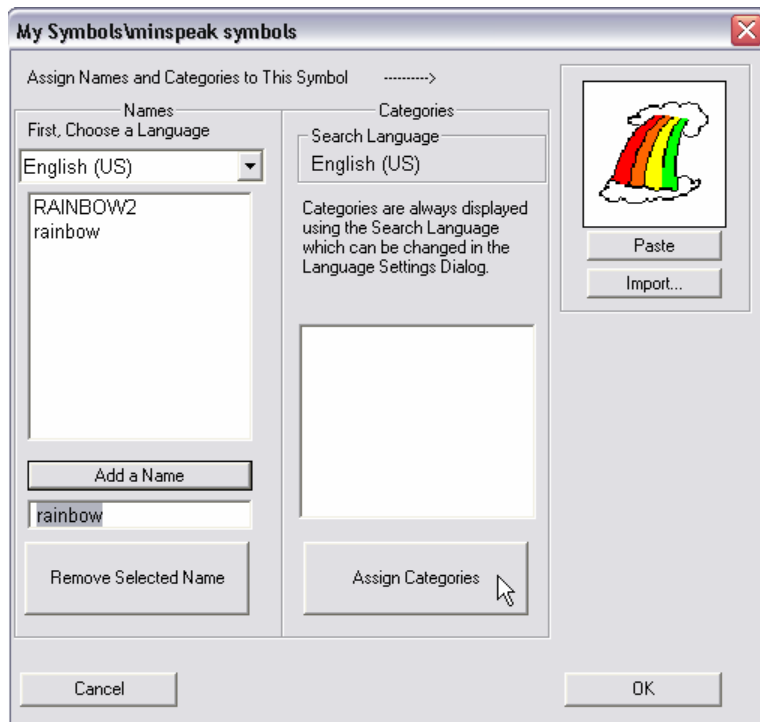


Type the new name in the blank space and click Add a Name. You can optionally select the old name and click Remove Selected Name.

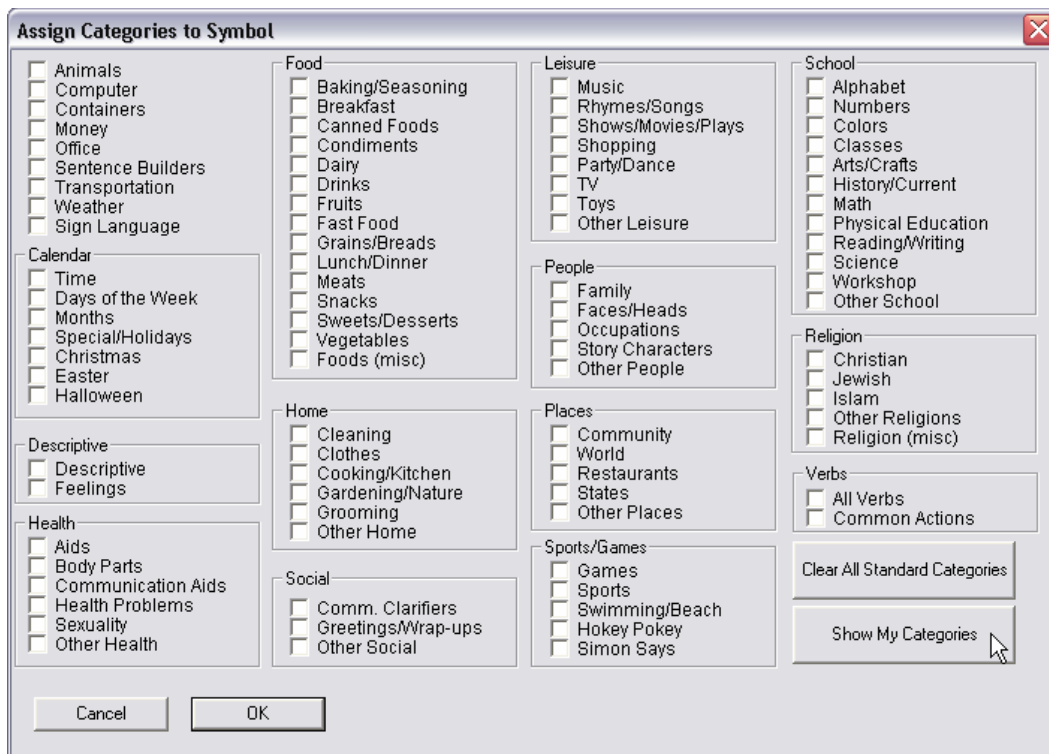


Assigning the Symbols to a New Category

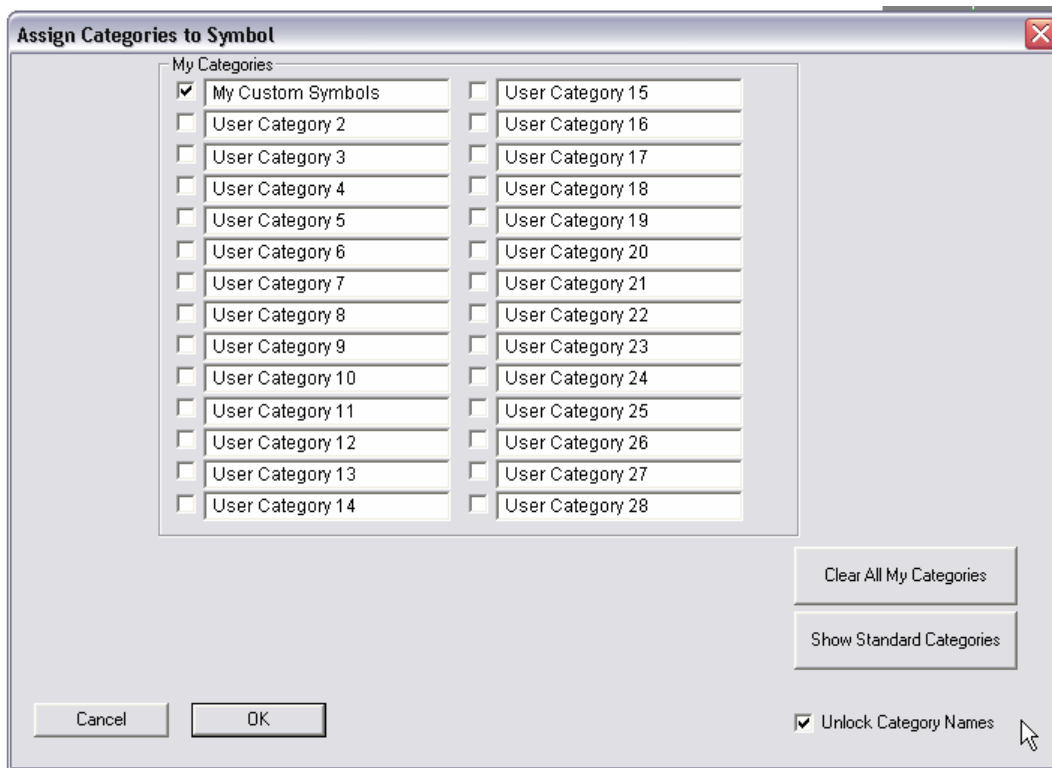
Now we need to create a category for the Minspeak symbols and assign the symbols to that category. Begin by clicking on the Assign Categories Button.



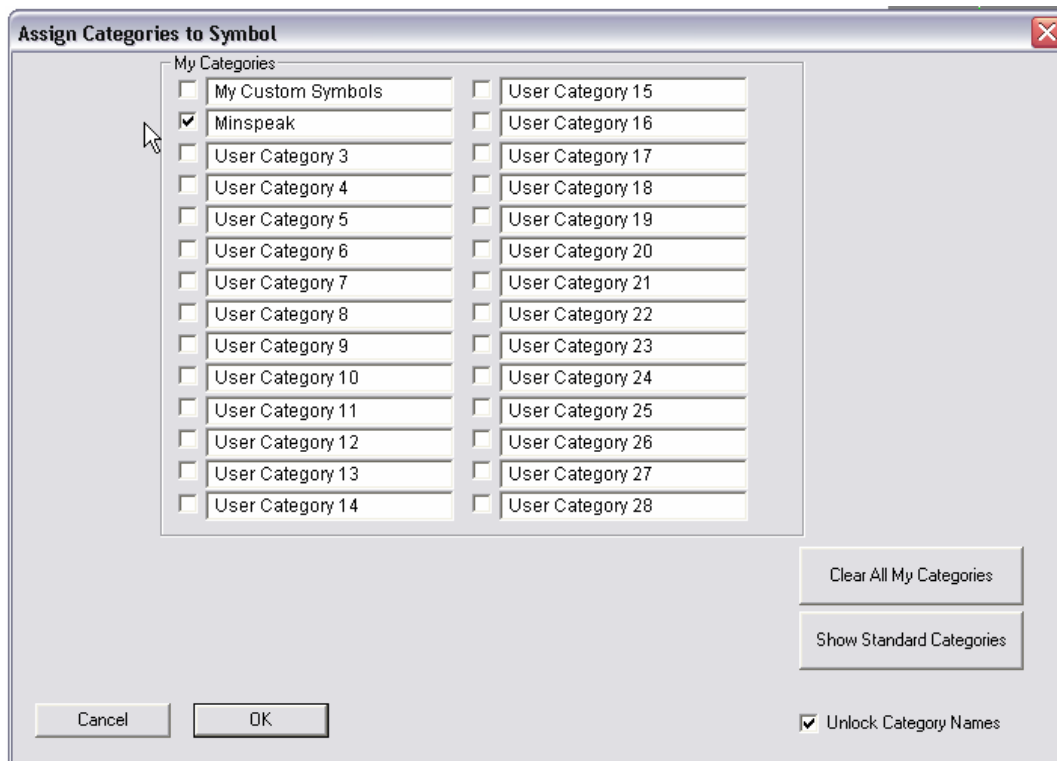
To get to the custom categories area, Click on Show My Categories.



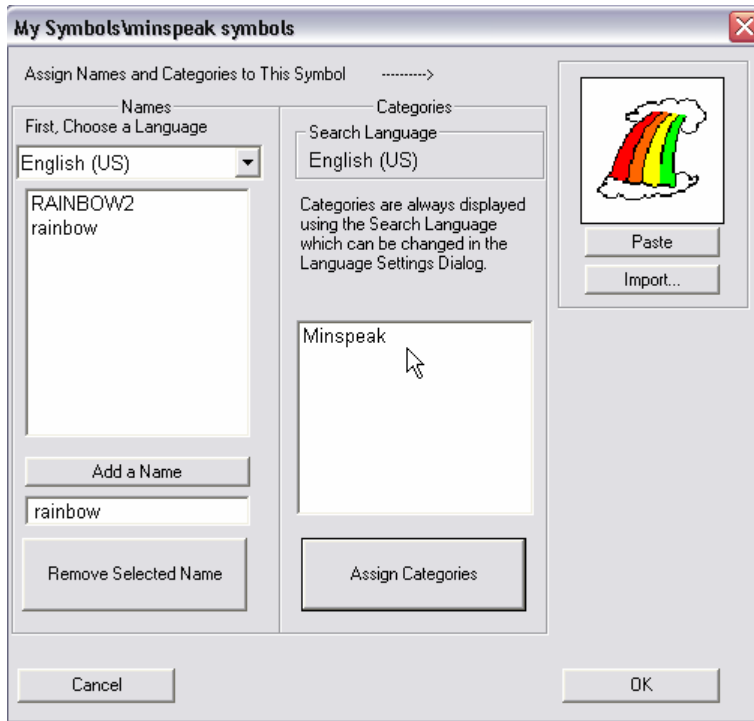
Next we want to rename one of the unused User Categories. Click in the box next to Unlock Category Names.



Choose any unused category and change its name to Minspeak or Unity. Click in the box beside the new Category name to assign the rainbow symbol to the Minspeak category. Click OK.

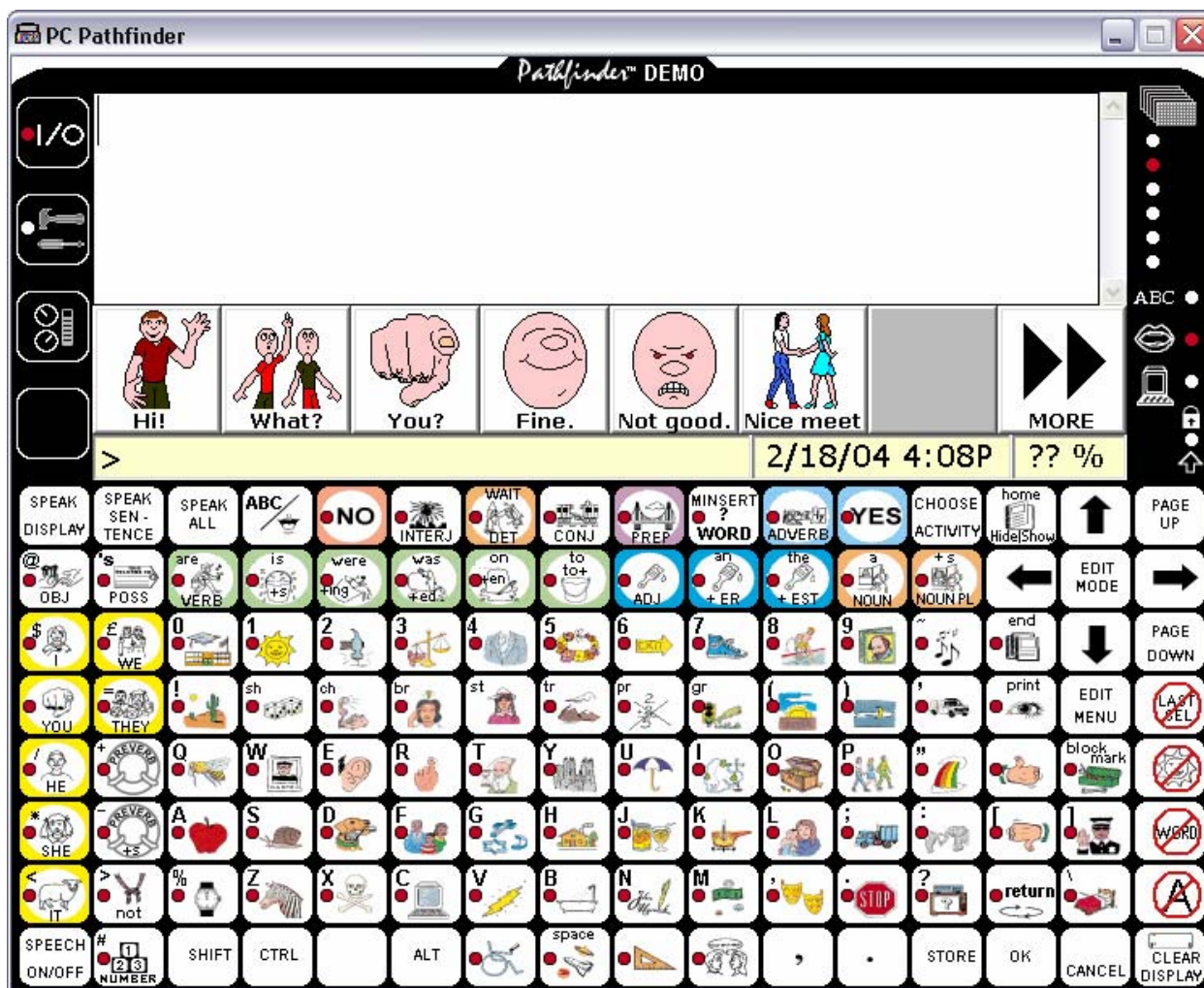


The rainbow symbol is now assigned to the Minspeak category.



Locating the Minspeak Symbols

It will be helpful to have your AAC device, its demo software, or at least a list of the symbol names beside you as you attempt to locate the symbols you need. For the purposes of this tipsheet I attempted to locate the full set of 128 Unity symbols for the Pathfinder.



It's probably easiest to go through the rows one by one, finding each symbol or group of symbols. With a few exceptions, searching by the correct symbol name or a word printed on the symbol will locate the symbol.

In order to find Row 1 symbols, for example, searching for the word "speak" in Boardmaker finds several of the symbols in the upper left hand corner. The interjections and conjunction symbols are found by searching for "interj" and "conj" respectively.

If you have trouble finding a symbol, press the key on the AAC device to discover its correct name. For example, the symbol in Row 4, Column 9, which looks like a crossed-out math problem is found in Boardmaker by searching for its symbol name "wrong".

Some tips and exceptions:

The arrow keys are found by searching for the words “up, down, left, right”.

The delete keys in the lower right hand corner are all located by searching for “delete”.

X-Ray is found by searching for XRay without the hyphen.

Medical is found by searching for “ambulance”.

Island is found by search for “map”.

You may not find symbols for keys that contain only words such as EDIT MENU or SHIFT, but you can easily make these if necessary.

I was not able to find exact symbols for I, Block Mark, or Hide/Show Notebook, but was able to substitute others.

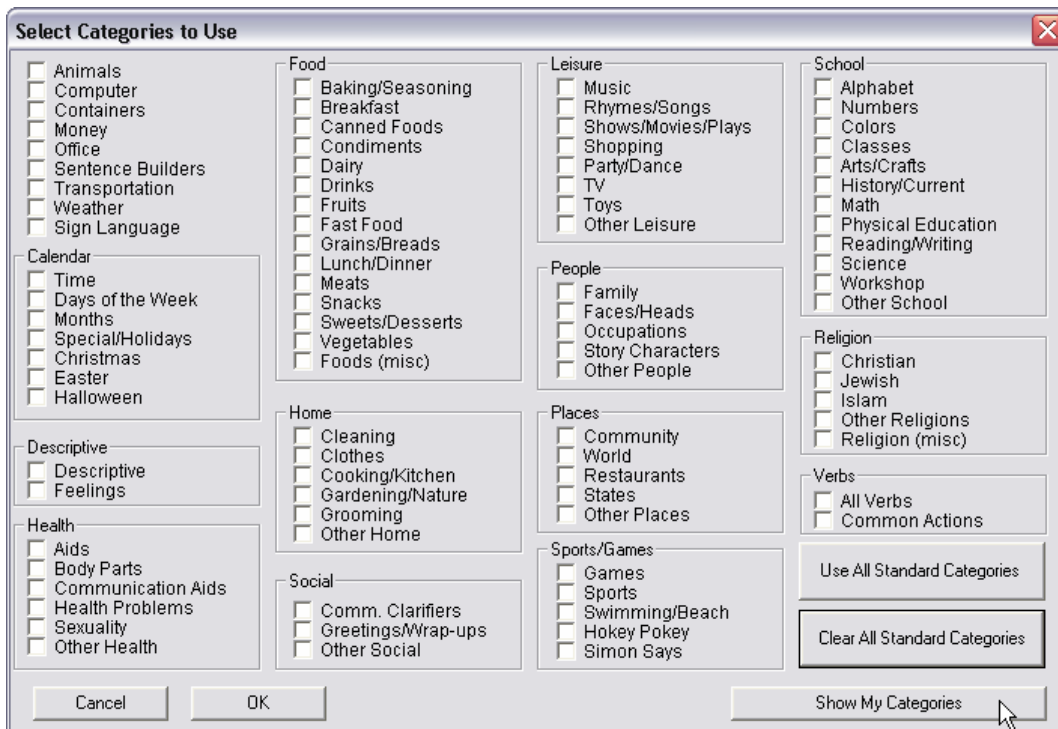
It took me a little over an hour to locate and classify about 140 symbols.

Using the Minspeak Symbols

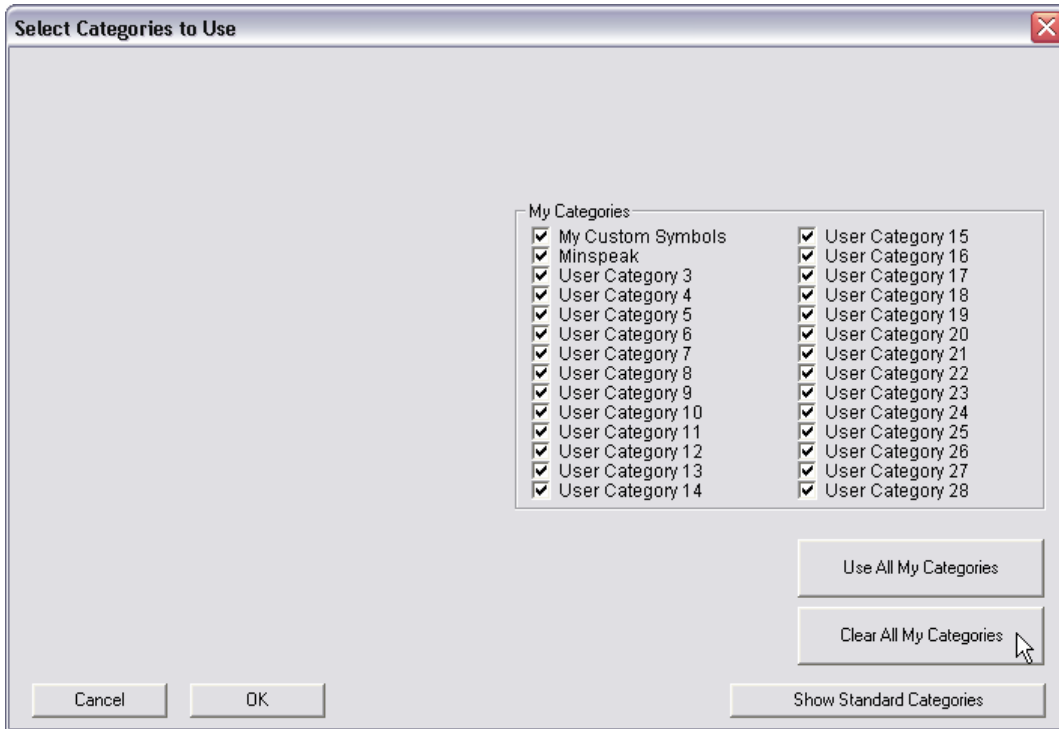
Once you have classified all the symbols, you can access them easily as a set. In the Boardmaker Symbol Finder, click on the Categories Button:



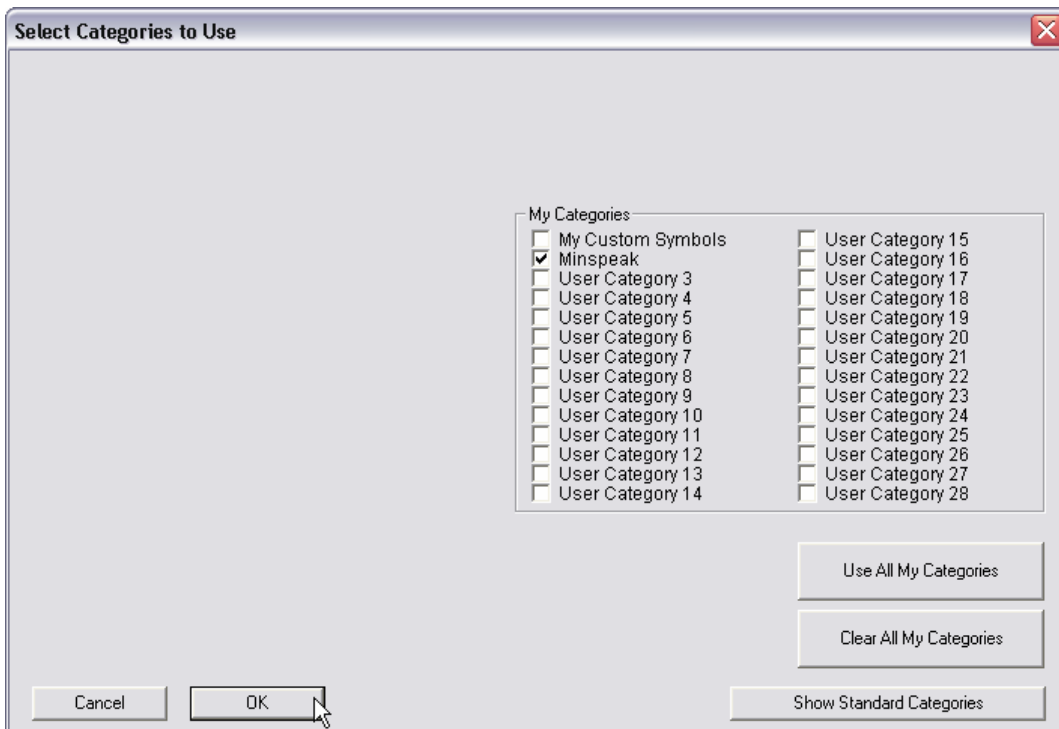
Then click on Clear all Categories to remove all the check marks. Then click on Show My Categories.



Click on Clear All My Categories:



Then click in the box beside Minspeak to show only the Minspeak Symbols and Click OK.



Now only the Minspeak symbols will be available and you can easily browse these and use them to create overlays, boards, and teaching materials.

