

Clicker 5

Introduction to Clicker 5

Clicker 5 is a talking word processor that has the ability to combine graphics, text and speech in custom reading and writing environments that can effectively support students' reading comprehension and written output. In this tutorial you will learn about some of the basic features of Clicker 5.

Completion of this tutorial will give you experience...

- launching the Clicker 5 program
- using the built in QuickTour to learn about the features of the program
- navigating ClickerExplorer to view sample reading and writing activities
- writing using the keyboard and ClickerWriter
- adjusting the speech and picture settings of a grid set or activity
- setting the user preferences

Before beginning this tutorial...

- ensure you have the Clicker 5 program installed on your computer's hard drive. Please refer to the installation and set up instructions that came with your software. NOTE: If you have Clicker 4 installed on your computer, you are NOT required to deinstall it first. Installation of Clicker 5 will not affect your Clicker 4 installation but will integrate your existing Clicker 4 grids into the Clicker 5 Explorer.

Quick Instructions

1. Launch Clicker 5.
2. In ClickerExplorer, locate the Quick Tour icon – double-click to launch the Quick Tour activity and navigate through the tour to learn about Clicker 5.
3. In ClickerExplorer, double-click to open the Examples folder and then open individual subject folders to find Clicker 5 example grid sets.
4. Double-click to launch any particular grid set and navigate the activity using the buttons on the grid.
5. Click the Explorer button on the Grid menu bar to return to ClickerExplorer.
6. With a sample writing grid open, hide the grid by clicking the “Hide Grid” button located on the ClickerWriter toolbar at the top of the screen.
7. Adjust the speech and picture settings of the grid by going to “File”, selecting “Settings” and then individual setting choices.
8. Set the user preferences for a particular student by going to the “Options” menu and selecting “User Preferences...”

Step-by-Step Tutorial

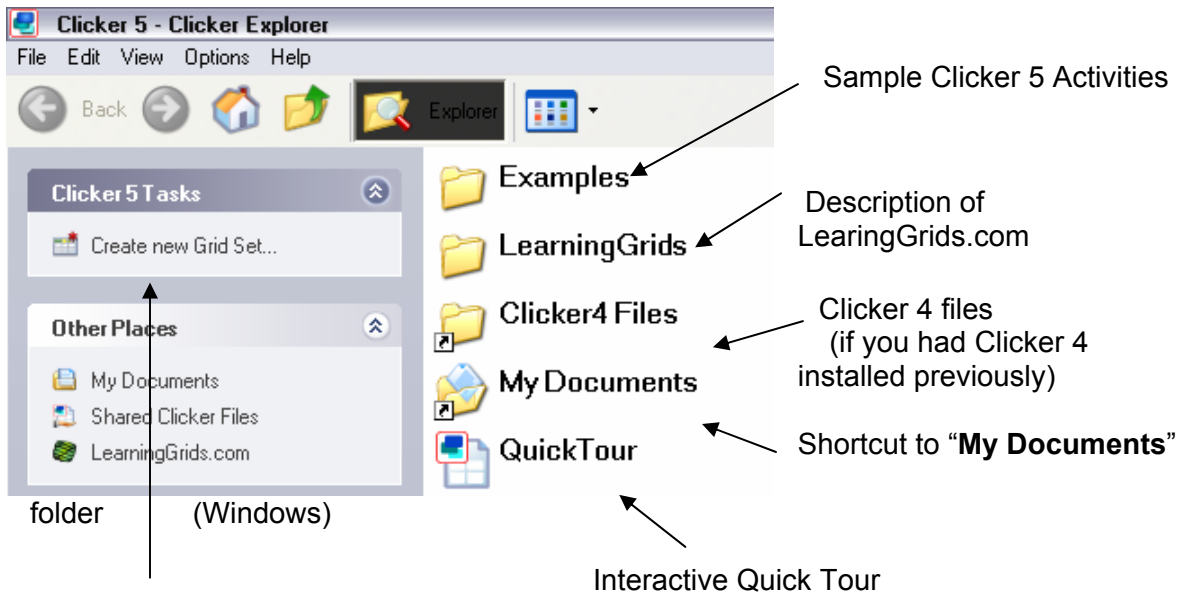
Launching Clicker 5

To launch the program...

Mac Users	Windows users
Double-click on the Clicker 5 icon on your desktop or system dock	<ul style="list-style-type: none"> • Go to the Start menu • Go to the All Programs list • Select "Crick Software" • Select "Clicker 5" <p>Note: You may choose to put a Clicker 5 shortcut on your desktop to eliminate these steps.</p>

Launching Clicker 5 will take you to ClickerExplorer. This area contains folders that help you organize your Clicker 5 activities.

Note: The following instructions use screen captures from Clicker 5 for Windows. However, the Macintosh version is virtually identical and so the instructions work regardless of your computer platform.

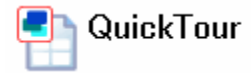


Link to create new Clicker 5 activity or Grid Set

The next step is to explore the new features of Clicker 5 by taking the "Quick Tour".

Exploring Clicker 5 Features by Taking the Quick Tour

Open the **Quick Tour** by double-clicking the icon in ClickerExplorer.



The **Quick Tour** has four main buttons.

- If you are familiar with Clicker 4, you may want to just click the “Click here to find out what’s new in Clicker version 5” button.
- If you are new to Clicker, start by clicking the “Introducing Clicker 5” button.

When you do, you will open this Clicker activity...



To take the tour, you will be using several buttons on the menu and grid.

The **“Show Me”** button opens a pop up grid that explains the features of the program.



The “**Close**” button closes the “Show Me” pop up.



The “**Move forward**” button located on the grid menu bar, moves you forward to the next grid in the tour.



The “**Go Back**” button returns you to the Quick Tour home page.



Finally, the “**Explorer**” button takes you back to ClickerExplorer.

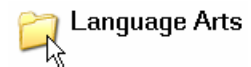


Using these various buttons, you can take the Quick Tour to familiarize yourself with the basic features of the program. Once you have finished the Quick Tour, return to ClickerExplorer so you can begin exploring some of the sample activities.

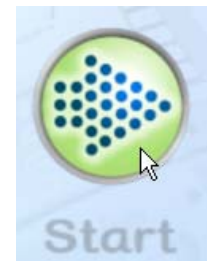
Navigating ClickerExplorer to View Clicker 5 Activities

ClickerExplorer contains an “Examples” folder which contains many sample reading and writing activities. Open the folder by double-clicking on it.

You will see five subject folders. Each of these contains specific activities. Open the “**Language Arts**” folder by double-clicking it.



You can open any of the sample activities listed by double-clicking the icons. On the activity’s home page you will find a “Start” button. Click it to enter the activity.



Notice that, if the activities are designed to support writing, when you click the buttons in the grid, the text and/or graphics are sent up to the word processing or “ClickerWriter” area of the activity.

When you have finished exploring an activity, return to ClickerExplorer to open another by clicking the “**Explorer**” button located on the grid menu bar.



You will be returned to the list of activities in the last folder you opened. If you want to see the other folders, move up a level by clicking the “**Move up**” button located in the ClickerExplorer menu bar.



If you ever get “lost” and want to get back to ClickerExplorer, click the “**Home**” button located in the ClickerExplorer menu bar.



To complete the next section of the tutorial, open the “**I can sentences**” activity located in the **Language Arts** folder in the **Examples** folder of ClickerExplorer.

Writing in ClickerWriter

As you learned in the Quick tour, the Clicker 5 program consists of two parts – ClickerGrids and ClickerWriter. ClickerGrids are fully customizable and can contain text, graphics or both. The buttons on ClickerGrids can be programmed to send text to ClickerWriter.

ClickerWriter is the talking word processor part of the program. For this section of the tutorial, we will concentrate on this part of the program.

You can always hide the ClickerGrid that may be open. To hide the grid, click on the “**Hide Grid**” button located on the ClickerWriter menu bar at the top of your screen.



This leaves the entire screen dedicated to ClickerWriter.

ClickerWriter has a toolbar at the top that contains helpful tools for students using the word processor.



By rolling your cursor over the buttons on the toolbar, a tooltip will come up describing the function of each button. The toolbar gives students access to tools for managing their files (New, Open, Save, Print), adjusting the font (Font, Bold, Italic, Underline, Font color), adjusting the document appearance (Background color, highlight color), adjusting the text alignment (Left, Center, Right), Spell checking, Speaking the text, Hiding the grid, and Inserting a picture.

Once you’ve explored the buttons on the toolbar, try typing a few sentences into ClickerWriter. Notice as you are typing, by default, ClickerWriter is not displaying any graphics and is speaking and highlighting the text when you come to the end of a sentence. In the next section of the tutorial you will learn how to adjust the settings to customize the writing environment to suit your particular student’s needs.

Adjusting the Clicker 5 Settings

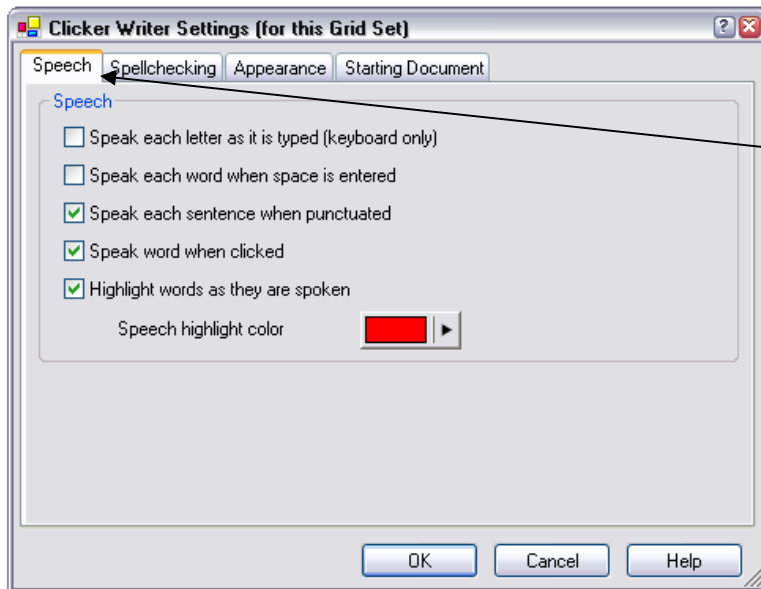
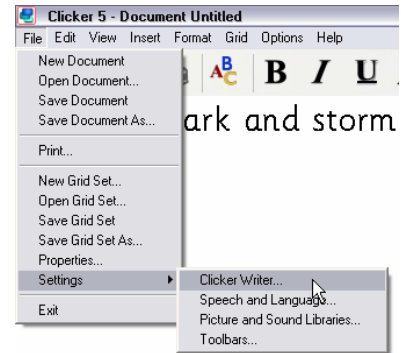
You can adjust a number of settings in Clicker 5 to give students more or less graphic and speech support. **It is very important to note the following:**

When you adjust the Settings in Clicker 5, you are doing so for the Grid set or activity you have open **ONLY**. Once you’ve adjusted the settings, each time you or your student opens the Grid or activity, the settings will be in effect. However, when you open a new or different grid set for the first time, the settings revert to the default settings and you will have to adjust them for that particular grid set or activity.

- To adjust the ClickerWriter settings...

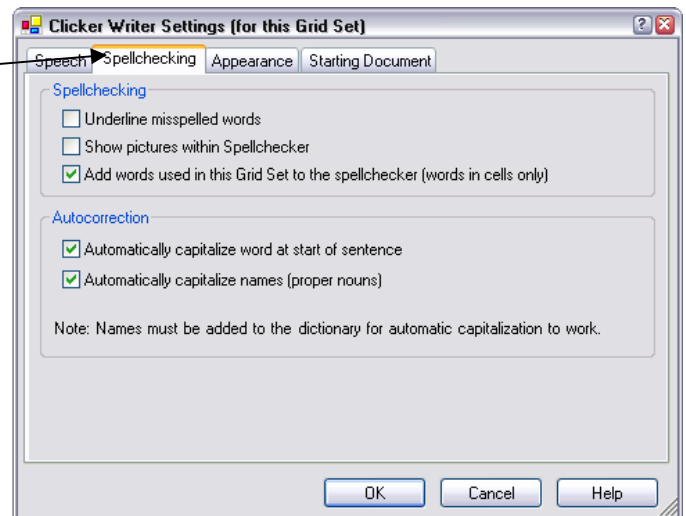
Go to the “File” menu, select “Settings” and “ClickerWriter...”.

The ClickerWriter Settings window opens and you will see four tabs at the top.

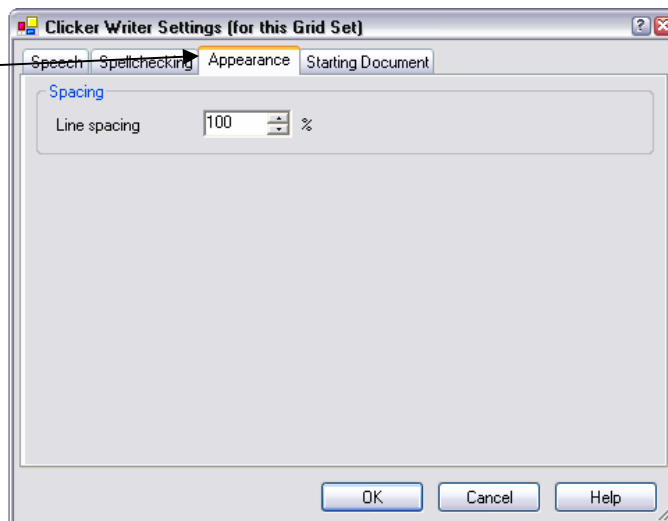


Notice on the first tab, “Speech” you can adjust when ClickerWriter speaks text as it is typed and whether or not the spoken text is highlighted.

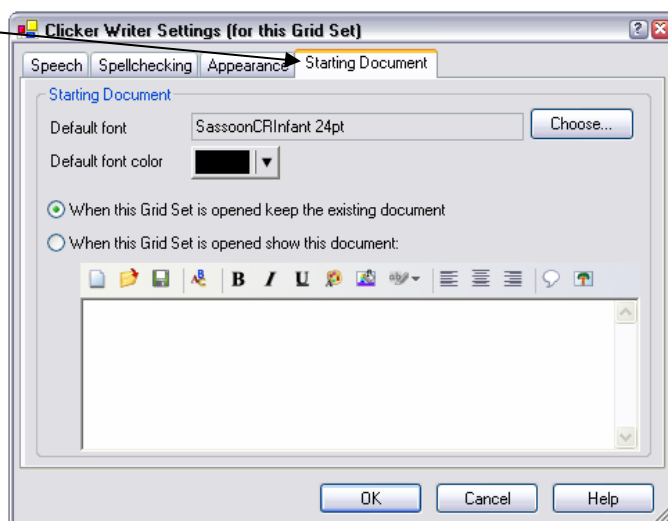
Under the “Spellchecking” tab, you can choose to underline misspelled words in the text, show pictures in the Spellchecker grid and set some automatic capitalization features.



Under the “**Appearance**” tab you can adjust the line spacing and increase the spaces between lines so students can read their text more easily.



Under the “**Starting Document**” tab you can set the default font and font colour for the activity and you can even set up a specific word processing document that you want to open when you start that grid set (for example, you could have a worksheet open up).

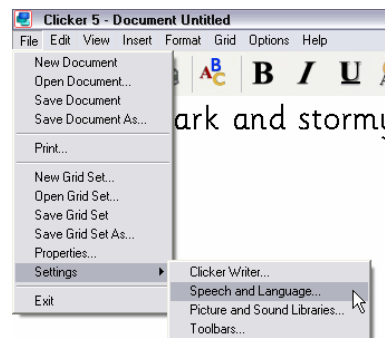


Once you have selected your ClickerWriter settings, click “**OK**” to exit the window.

- To adjust ClickerWriter’s speaking voice, go to the “**File**” menu, select “**Settings**” and then “**Speech and Language...**”.

On the window that opens up, you can change the speaking voice and adjust the speed and pitch of the voice. This helps if you are trying to make the voice more “child-like”.

This window also has a “**Change Pronunciation**” button which allows you to add unusual or mispronounced words to the program’s lexicon.



To adjust the type of graphics that ClickerWriter displays when text is typed, go to the “File” menu, select “Settings” and then “Picture and Sound Libraries...”

When the window opens up, you will see two important areas...

The Picture Libraries

In this area you can select or deselect the picture libraries you want ClickerWriter to use. You can also move the selected libraries up and down the list in order of search priority.

Notice in this example, Mayer-Johnson’s PCS library has been installed. If you wanted to have those symbols appear first (before the Crick symbols) you would highlight it and move it up in the list using the “Move Up” buttons.

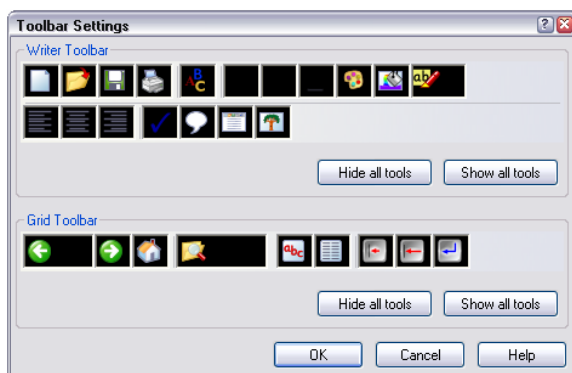
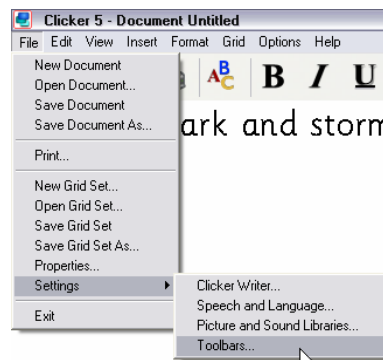
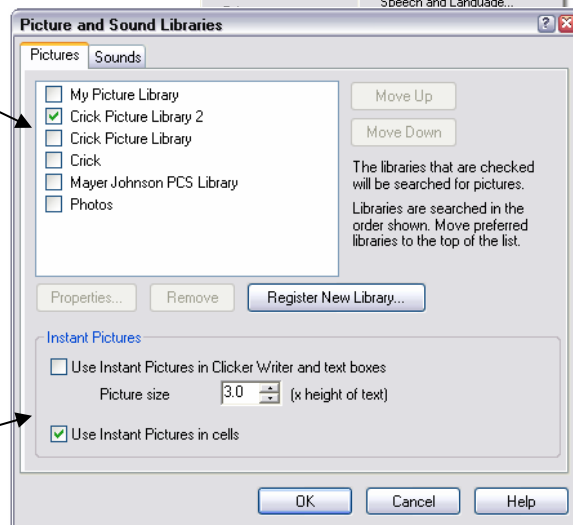
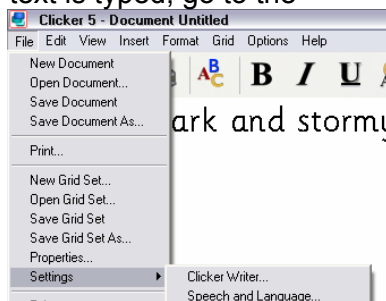
The Instant Pictures

You must have “Use Instant Pictures in ClickerWriter and text boxes” selected to have ClickerWriter display graphics as text is entered.

You can also adjust what buttons appear on the toolbar when the grid set or activity is opened.

- To adjust the toolbars, go to the “File” menu, select “Settings” and then “Toolbars...”

When the window opens up, you will be able to show or hide the various buttons that appear on the ClickerWriter toolbar. You can also hide or show ALL toolbar buttons.

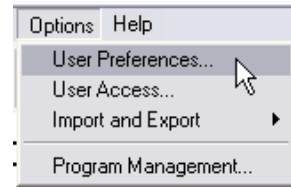


It is important to remember at this point, that any adjustments you have made to “**Settings**” apply to the specific grid set or activity you have open. If you want to adjust preferences for a specific student, you would do so under “User Preferences”. This is explained in the next section of the tutorial.

Setting the User Preferences

Sometimes, when working with a particular student, you want to set preferences for that student that will apply to any grid set or activity he or she may open. This is done by setting the User Preferences.

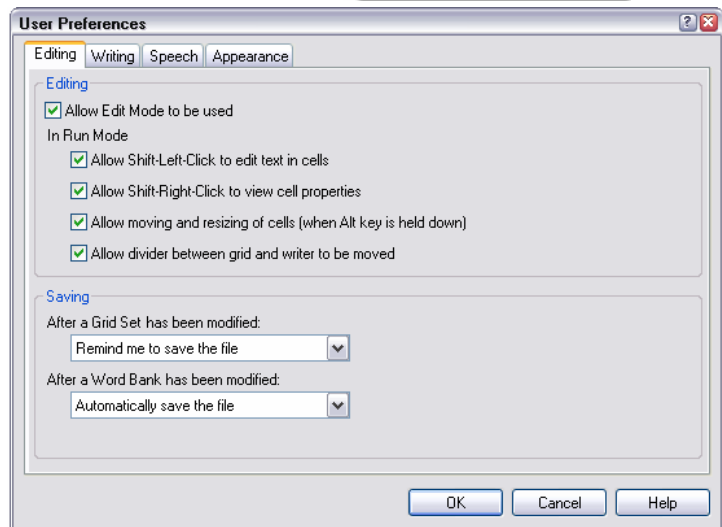
To set User Preferences for a student, go to the “**Options**” menu and select “**User preferences...**”



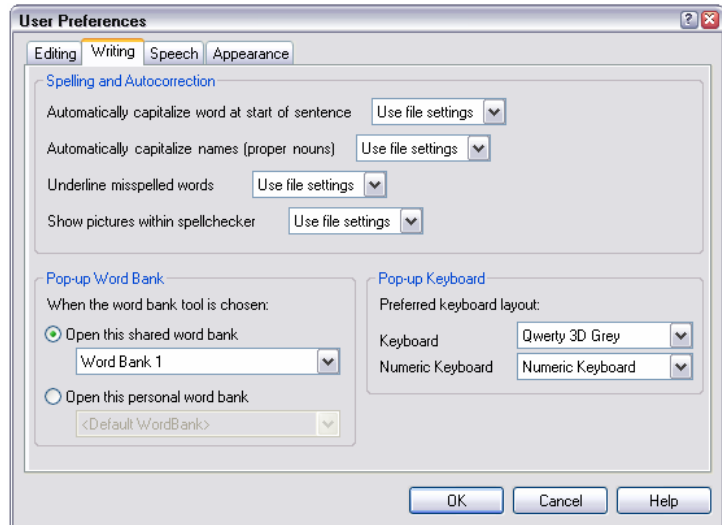
On the window that opens up, you will see four tabs.

Under the “**Editing**” tab, you can change the level of access to the activity’s Edit Mode. You would deselect these items if you want to limit how much a student can change an activity.

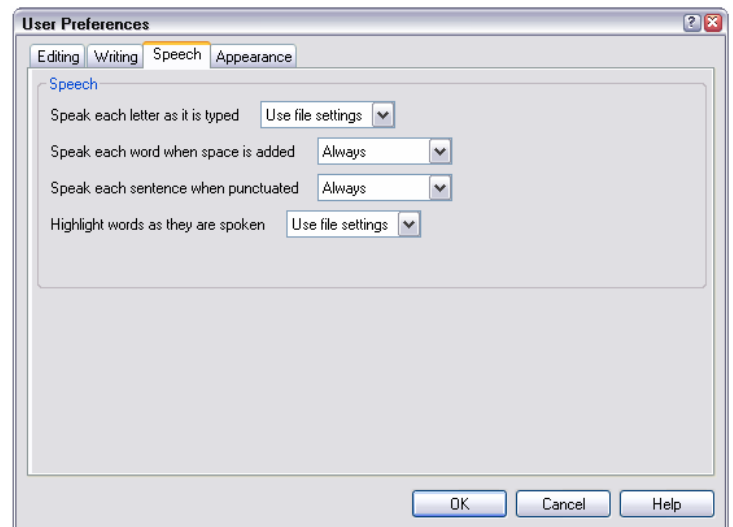
Under this tab you can also set how a Grid Set is saved.



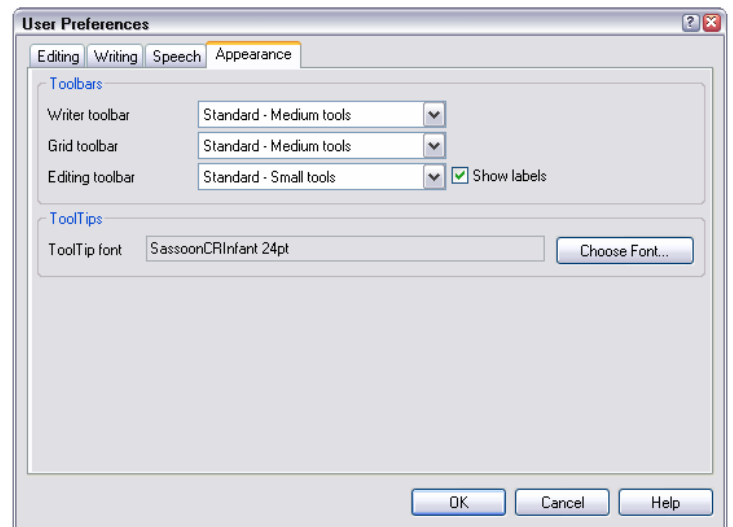
Under the “**Writing**” tab, you can decide if you want to use the activity’s settings (Use file settings) or customize the preferences for the specific student or user (change the drop down choices).



Under the “**Speech**” tab, you can change how ClickerWriter speaks as text is entered.



Under the “**Appearance**” tab, you can change how the toolbars appear to the student when using the program.



IMPORTANT NOTE: The User Preferences will override any Grid Set or activity settings you may have adjusted for the specific activity you have open. If you are using Clicker 5 with only one student, it makes sense to create a User Preference file for that student and then you wouldn't have to adjust each Grid Set individually.

Please refer to the short tutorial on setting up User Preference files for more information on using this valuable feature.

Once you have finished creating the User Preferences for your student, you can click “**OK**” to exit this window.

This concludes the introductory tutorial on Clicker 5. Please look for other tutorials and Clicker 5 demonstrations at http://www.setbc.org/setbc/access/access_clicker5_resources.html.