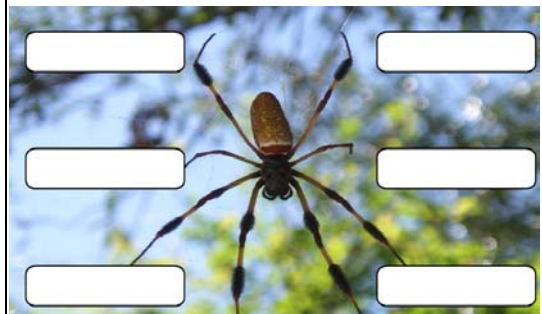
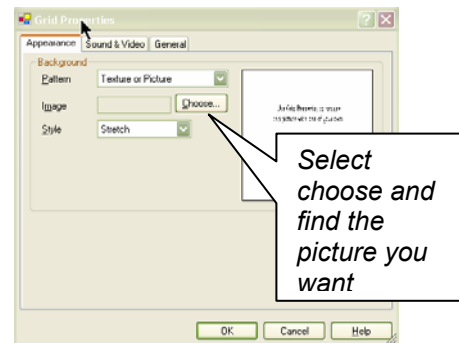
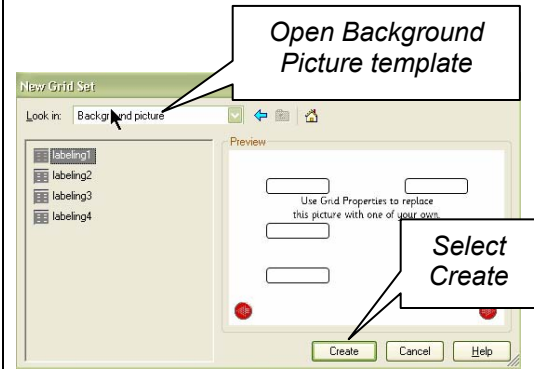
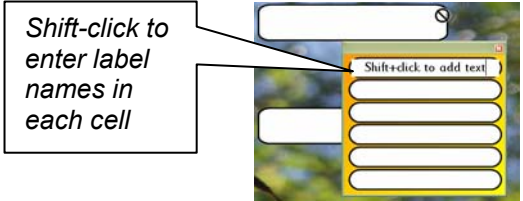
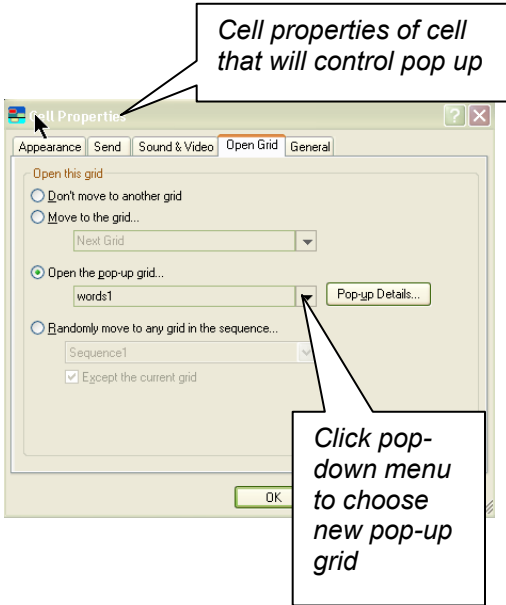


Clicker 5 Quick Start Guide

Clicker 5 has a new type of grid called a Pop Up. It has all the features of a regular grid but is smaller and floats on top of the grid containing the cell that controls it. It works very well when you are creating activities with word banks to fill in blanks or label pictures. This Quick Start Guide describes the main steps in creating a pop up grid to label a picture.

Creating a Pop-up Grid to Label a Picture	
1	<p>Launch Clicker 5 – from ClickerExplorer...</p> <ul style="list-style-type: none"> • Choose New Grid Set • Double click on the “Labeling” folder • Double click on Background Picture • Select Create
2	<p>Go to File > Grid Properties to replace the background you see with the background picture you want to use in your curriculum activity.</p> <ul style="list-style-type: none"> • Under the Appearance tab, select Choose and navigate on your hard drive to where your background picture is stored. • Double click the picture file when you find it and it will appear in Clicker with blank labels on top of it.
3	<p>Note: Your picture appears behind a number of cells or labels.</p> <p>Each blank label already connects to a built in pop-up grid (they are part of the labeling template).</p>



<p>4</p>	<p>Click on a cell to open the pop-up grid linked to that cell.</p> <ul style="list-style-type: none"> • Shift-click on each cell to enter text or label choices into the pop-up grid. <p>Save your grid set frequently (Ctrl-S)</p>	
<p>5</p>	<p>Note: The name of the pop-up you have created is listed on the top left corner of the pop-up. This pop-up will be the default choice for all the labels on your picture (it will open when you click each cell label).</p> <p>A pop-up other than the default can be created in Clicker Explorer.</p> <ul style="list-style-type: none"> • In Clicker Explorer double click on another pop-up choice (e.g. Words2). • Enter text in THAT pop up by using Shift-clicking in the cells. <p>On your original picture change the properties of any cell so that it will open the other pop-up...</p> <p>In Edit mode, Shift-right click on the cell and go to Properties. Under the Open Grid tab</p> <ul style="list-style-type: none"> • select the new pop-up choice using the Open the pop-up grid... drop down menu. Choose the pop up from the list that you would like that cell to open. 	
<p>6</p>	<p>To change the settings around how an individual pop-up grid acts and reacts, click the Pop-up Details button located next to its name in the Open the pop up grid... drop down list.</p> <p>Choose the parameters for your pop-up grid and click OK to exit the windows.</p>	