

Clicker 5

Modifying a ClickerGrid

Introduction

Clicker 5 is a talking word processor that has the ability to combine graphics, text and speech in custom reading and writing environments that can effectively support students' reading comprehension and written output. The program has many built in examples of ClickerGrids that can be modified to suit your particular student's need. In addition, www.LearningGrids.com has a collection of ClickerGrids that can be freely downloaded and used or modified as needed.

This tutorial assumes...

- you have the Clicker 5 program installed on your computer's hard drive. Please refer to the installation and set up instructions that came with your software.
NOTE: If you have Clicker 4 installed on your computer, you are NOT required to uninstall it first. Installation of Clicker 5 will not affect your Clicker 4 installation but will integrate your existing Clicker 4 grids into the Clicker 5 Explorer.

Learning Objectives

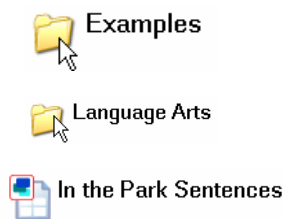
Completion of this tutorial will give you experience...

- changing the text in an existing ClickerGrid
- adding graphics or symbols to cells on an existing ClickerGrid
- adding or removing cells from an existing ClickerGrid
- adjusting the Grid Speech settings
- saving a ClickerGrid

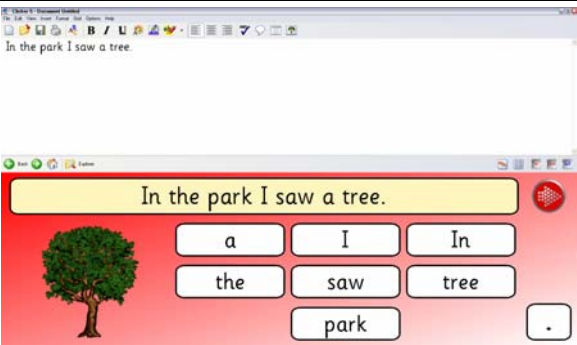
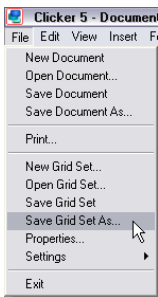
Case Study

Brian is a Grade 3 student with Down Syndrome. He is at a beginning stage of literacy and requires support for both reading and writing. He is motivated to create his own "print outs" and so his team decided to use Clicker 5 to help him create simple sentences about topics he likes to talk about. The team looked at the sample Grid sets that come with Clicker 5 and decided they wanted to use the structure of the "In the Park Sentences" Grid set but change it to include sentences and vocabulary specific to Brian's needs. Once they had modified the Grid set, they introduced it to him and he was very excited to be able to "write" his own sentences. The auditory feedback really helped him choose the correct words to create grammatically accurate sentences. His team liked the structure so well, that the team members went on to create more Grid sets based on that template for various curriculum topics and seasonal holidays.

Launching Clicker 5 and Opening a Clicker 5 Example

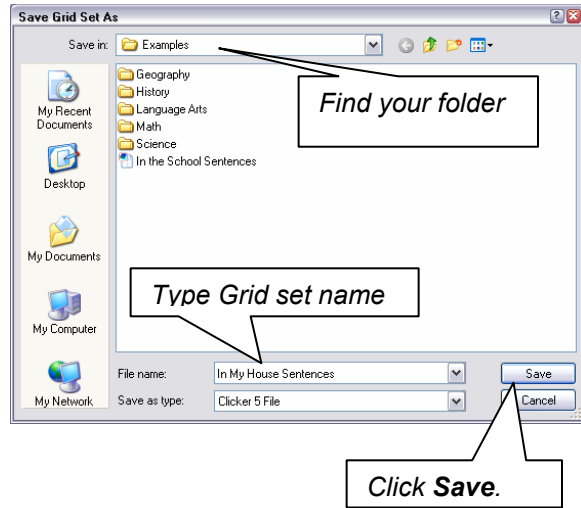
<p>1</p>	<p>Launch Clicker 5 from the desktop or programs list.</p>	<p>Windows Users</p> <ul style="list-style-type: none"> • Go to the Start menu • Go to the All Programs list • Select “Crick Software” • Select “Clicker 5” <p>Note: You may choose to put a Clicker 5 shortcut on your desktop to eliminate these steps.</p> <p>Mac Users Double-click the Clicker 5 alias on your desktop or system dock.</p>
<p>2</p>	<p>Launching the program will take you to ClickerExplorer. Open a Clicker Grid set by double-clicking on the “Examples” folder in ClickerExplorer. Double-click on the “Language Arts” folder (Macintosh – “Literacy”) and then double-click on the “In the Park Sentences” Grid set to open it.</p>	

Saving the Grid as a New Grid Set

<p>1</p>	<p>The “In the Park Sentences” Grid set is designed to have the student click on the completed sentence to hear it and then click on the words in the correct order to create the sentence.</p> <p>Try the activity to become familiar with how it works and then close it and reopen it before beginning the next step.</p>	
<p>2</p>	<p>IMPORTANT! Before modifying any Grid set, you must File ➤ Save Grid Set As... and rename the Grid set. If you don't do this step, you may alter the original Grid set and then it won't be available if you need it in the future.</p>	

Go to File ➤ **Save Grid Set As...** and in the **Save** window, navigate to the folder you would like to save your Grid set and type the file name "In My House Sentences" in the **File Name** field. Click **Save**.

You can now begin modifying the grid by changing the text in the cells and adding graphics.



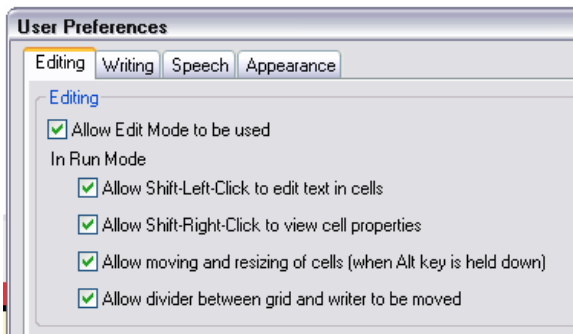
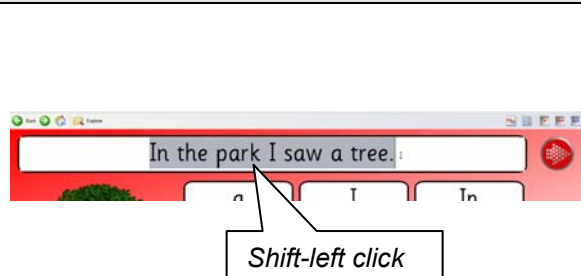
Changing Text in a Cell

You are going to write a new sentence for students to create using this grid.

To change the text in the top cell of the grid, hold down your Shift key on your keyboard and left-click in the cell (Macintosh – **Shift-click**). You should see the text highlight and the flashing caret that will allow you to type.

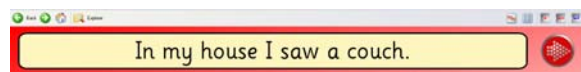
1

NOTE: This assumes you have started Clicker 5 using preferences that will allow you to edit grids. If Shift-left clicking does not give you the ability to type in the cell, go to **Options ➤ User preferences...** to make sure you are allowed to Edit grids.



2

With the text highlighted in the cell, type "In my house I saw a couch." Click **Enter** (Macintosh – **Return**) to set the text in the cell.



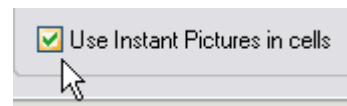
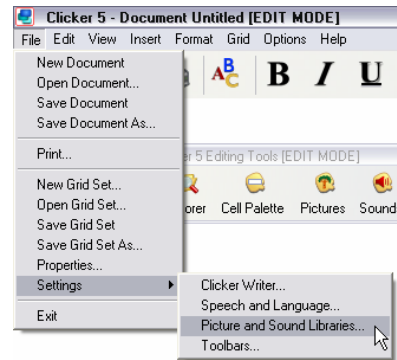
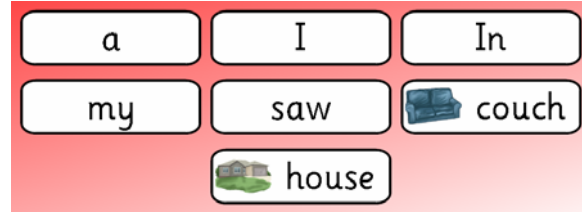
3

Shift-left click (Macintosh – **Shift-click**) the other cells on the grid to change the text so the student can create the sentence.

You should have noticed that when you typed in “couch” and “house” graphics were also added to the cells.

This is because the Grid settings are set up to allow “Use Instant Pictures in Cells”. To see these settings, go to **File > Settings > Picture and Sound Libraries...**

On that window you will see that the box next to “Use Instant Pictures in cells” is selected. If you don’t want pictures to show up in cells as you change the text, you would deselect this box.



Adding Graphics to the Cells and Grid

1

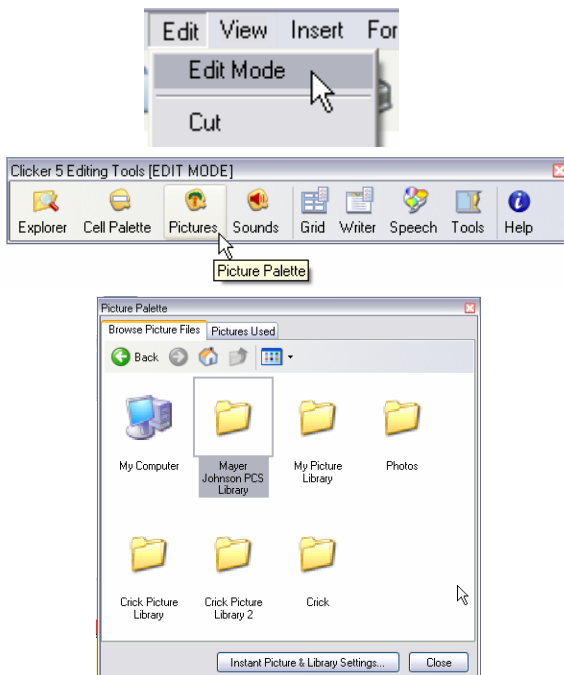
You may want to add graphics or symbols to cells in the grid. For example, you may want a different picture of a couch.

This is very easy to do. Begin by going to **Edit > Edit Mode**.

A floating palette will appear giving you access to the cell and grid editing tools.

Click the Pictures button on the palette to access your graphic libraries. The Picture Palette will display all the graphics folders available to Clicker. The folders will include (Windows):

- the Crick (Clicker) libraries
- My Picture Library (a place to store your own pictures)



<ul style="list-style-type: none"> • Photos <p>The folders may also include the Mayer Johnson PCS library IF you have those installed.</p>	
<p>2</p> <p>Open the “Crick Picture Library 2” folder by double clicking on it. Locate the “Household” folder and open it.</p> <p>Open the “Living Room” folder (Windows) to find a different picture of a couch. To replace the picture of the couch you already have in your cell, simply click, drag and drop the new picture onto that cell.</p> <p>You can open any of the graphics folders, locate a picture and click, drag and drop it onto the cells on the grid. Use the Back button on the window palette menu bar to navigate back and forth between folders and subfolders.</p>	

Moving, Resizing and Adding Cells

<p>1</p> <p>Cells in ClickerGrids can be moved, resized and new cells can be added. In this example, we are going to change the graphic in the tree cell and move it so we can add three more cells containing house pictures. Students will be able to choose a picture of a house that more closely resembles their own.</p> <p>Begin by changing the picture on the tree cell. Locate a picture of a home in Picture Palette ➤ Crick Picture Library 2 ➤ Homes folder. Once you have found a picture, click, drag and drop it onto the tree cell.</p>	
--	--

Remove the text on the cell by **Shift-left clicking** the cell (Macintosh **Shift-click**) and pressing **Delete** and **Enter** on your keyboard.

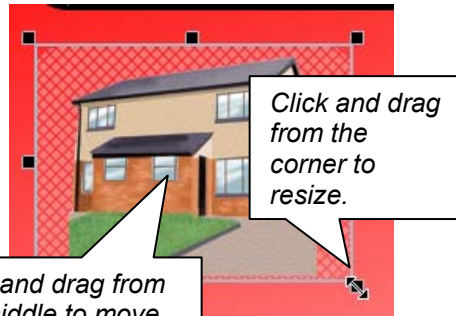


To make room for three more pictures of houses, you must resize the existing house cell.

Roll your cursor over the cell's lower right corner until you see a two headed sizing arrow. **Click and drag diagonally** to resize the cell.

2

To move the cell, **click in the middle of the cell and drag** it to its new location. Move it so there is room to add three new cells.



To add a new cell to the grid, click on the **Cell Palette** button on the Editing Tools Palette.

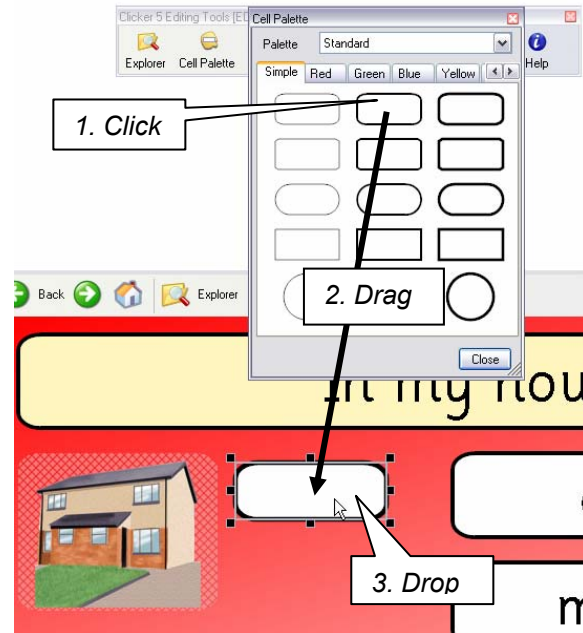
On the window that opens, select a button style and then **click, drag, and drop** the cell onto the grid.

Move and resize the button as you did before.

3

Add two other buttons to that area on the grid. (**NOTE:** You can also select the cell you just made by pressing **Ctrl – click** or **Options – click** and then copying and pasting a duplicate cell)

Go back to the Picture folders and move pictures of other homes into the three new buttons. Remove the text so only the pictures remain.



You'll notice at this point that the three new cells have white backgrounds while the original cell is transparent. You can adjust this by going to the Cell Properties of the cells and choosing a different background.

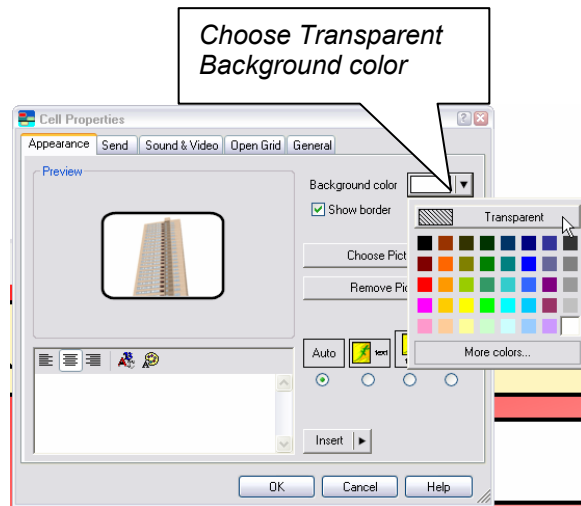
Shift – right click on one of the new cells (Macintosh – **Ctrl – click “Properties”**) and the Cell Properties window opens. This is the area where you can change everything about how the cell looks and acts in this Grid set.

4

In this example, you want the four home cells to match. Click on the **Background color** drop down menu under the “Appearance” tab and choose “Transparent”.

Notice that you can adjust many options under “Appearance” including changing the picture, the location of any cell text, the text itself and so on.

Once you've changed the background to “Transparent” click **OK**.

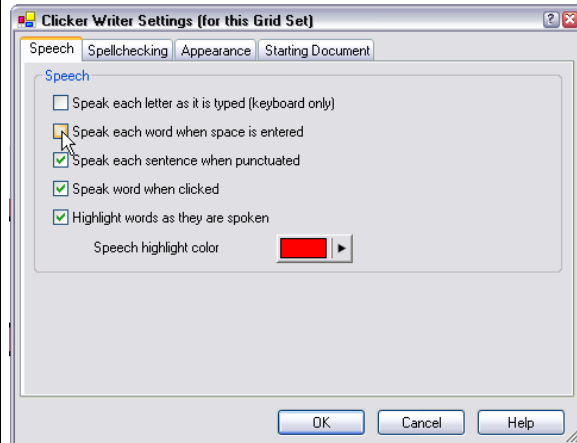


Adjusting the Grid Set Speech Settings

You can adjust the auditory feedback of this Grid set when text is sent to ClickerWriter by going to **File > Settings > ClickerWriter**. Under the “Speech” tab, you can select or deselect the options to suit your student’s needs.

1

Once you have set up the auditory feedback you want, click **OK**.



2

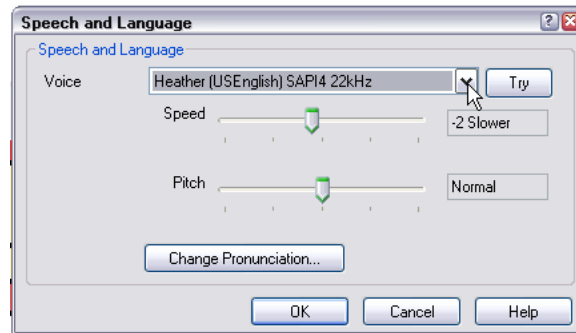
You can also adjust the speaking voice by going to **File > Settings >**

Speech and Language...

On this window you can change the speaking voice by clicking the drop down menu as well as the pitch and volume of the selected voice.

This window also gives you access to the program feature which allows you to correct mispronunciations.

Click **OK** when you have finished setting the speaking voice.



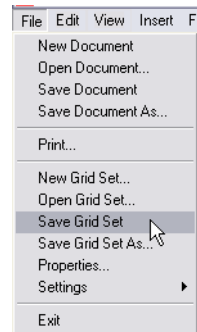
V Tip...

The settings you have adjusted apply only to this particular Grid set. You can change the settings for each Grid set you create. If you are working with more than one student with different needs, you can also set up User Preferences (under the "Options" menu) which will apply to any Grid set that is opened regardless of the Grid set settings. See the specific tutorial on how to manage Settings and User Preferences.

Saving the Grid Set

1

You can continue to modify the various grids in this Grid set but you should remember to periodically Save any changes. To save your Grid set as you work go to **File > Save Grid Set**.



V Tip...

You can **Save as...** and modify any of the Example Grid sets that came with your Clicker 5 program. You can also download and modify Grid sets from www.LearningGrids.com in exactly the same way. The Learning Grids are downloadable for both Windows and Macintosh to anyone, free of charge, who registers on the site. There are many different types of Grid sets available offering an excellent starting point when creating your first Clicker activities.

This concludes the tutorial on Modifying a ClickerGrid. Please look for other tutorials and Clicker 5 demonstrations at

http://www.setbc.org/setbc/access/access_clicker5_resources.html.

