

Clicker 5 (Windows)

Creating a Home Grid to Launch Activities

Introduction

When you first start Clicker 5 you see Clicker Explorer. From this location you can accomplish a number of tasks including opening example files, your own files or create your own grid sets. The interface may not be helpful for students, however, who may find it difficult to find and open Clicker activities. Creating a Home grid with cells that open other activities or grids will help them use the program more independently.

Quick Instructions

1. Launch Clicker 5.
2. Click on the link "**Create new Grid Set**".
3. Create a "**Non-Sending**" Grid Set (Blanks – Blank Grids).
4. Enter "**Edit mode**".
5. Add a cell from the "**Cell Palette**". Resize it.
6. Copy the cell and paste as many other cells as you want on the grid.
7. Add text and graphics to the cells depending on which activities you want to open with each.
8. Open the "**Cell Properties**" of each cell and, under the "**Open Grid**" tab, select "**Move to**" grid, "**Choose**" and "**Browse**" to the grid sets you would like to open when the cell is clicked.
9. Save the grid set as "**Home**" in the "**Clicker 5**" (shared documents) folder.
10. Quit Clicker 5 and relaunch – your new Home grid should open.

Step-by-Step Tutorial

Creating the New Home Grid

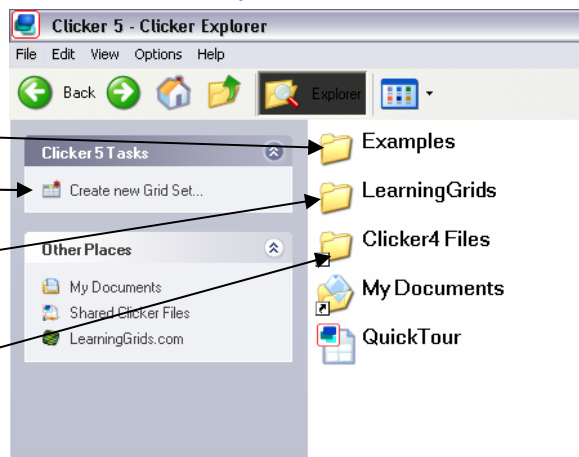
1. Launch Clicker 5 from your Programs list. When it opens up you will see **ClickerExplorer**.

In ClickerExplorer you can view the Example Clicker activities

Create a new Grid Set

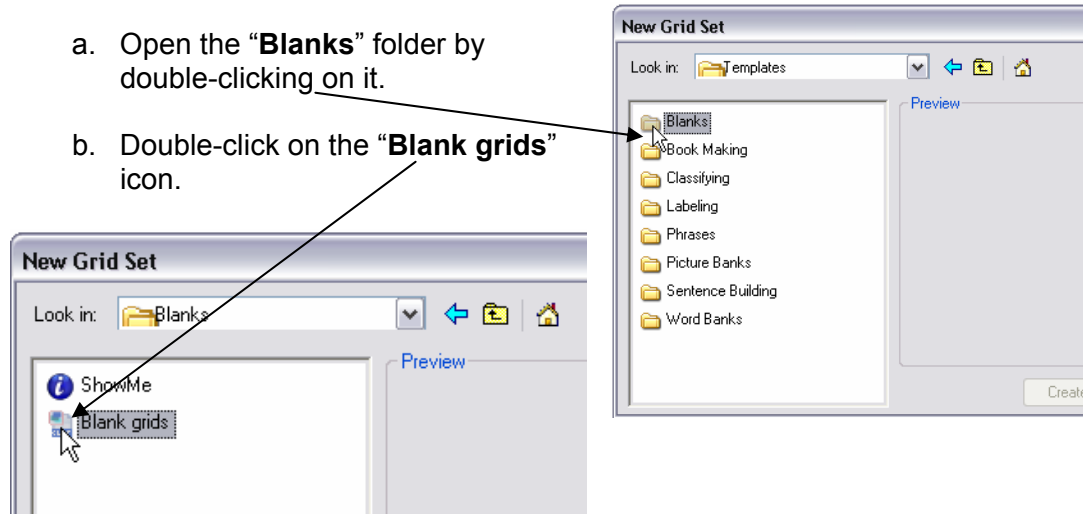
Find directions for accessing downloadable Clicker Grids from LearningGrids.com

Open any Clicker 4 grids you may have (assuming you had Clicker 4 installed)

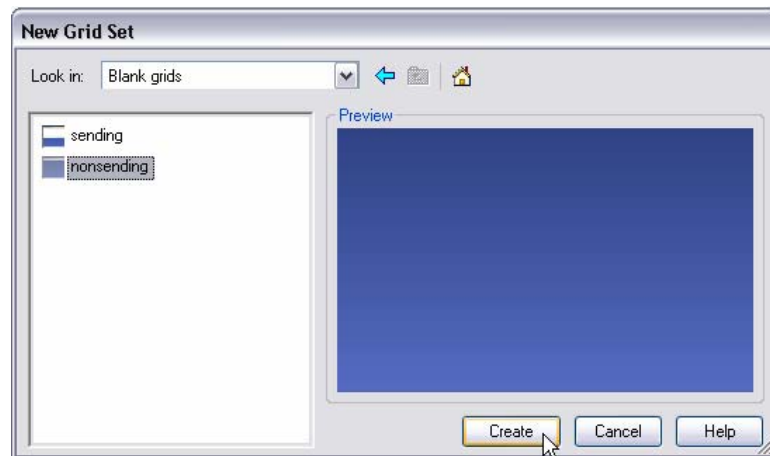


2. Click on the link “**Create new Grid Set**”. The New Grid Set window will open up and you will see a number of folders that contain grid templates.

- a. Open the “**Blanks**” folder by double-clicking on it.
- b. Double-click on the “**Blank grids**” icon.



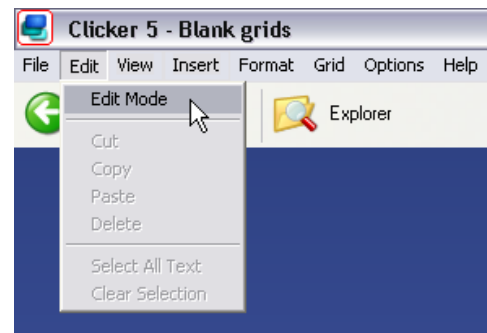
- c. Create a “**Nonsending**” grid by clicking on it and clicking the “**Create**” button.



A new blank Grid Set will open up.

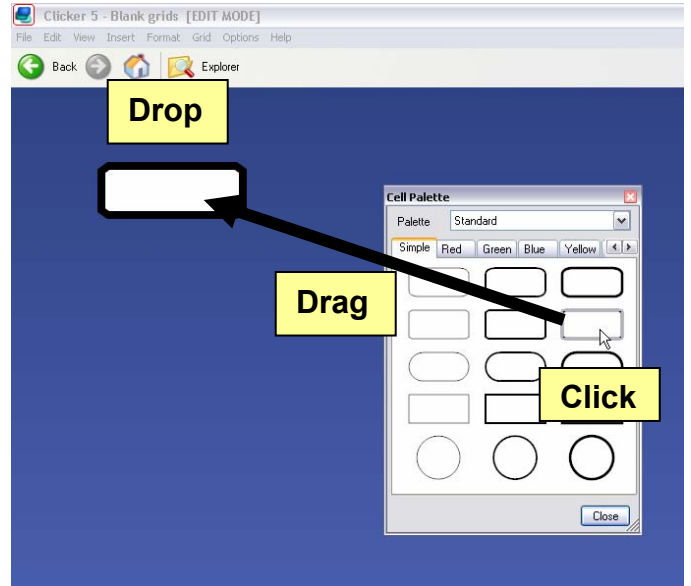
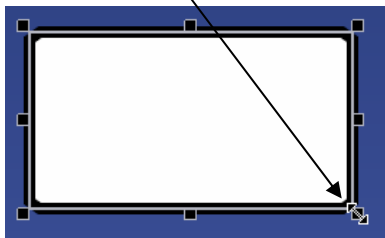
Adding Cells to the New Grid

To add new cells and change the Grid, you must enter “**Edit mode**”. Under the “**Edit**” menu, select “**Edit mode**”. This turns it on and brings up the Editing Tools window.

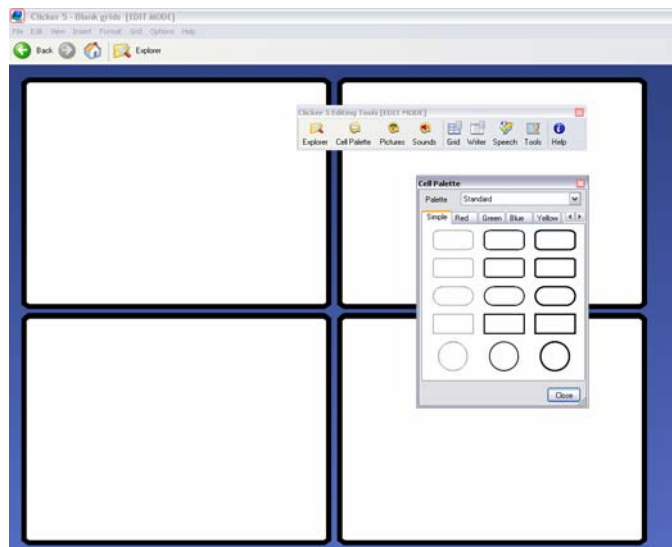
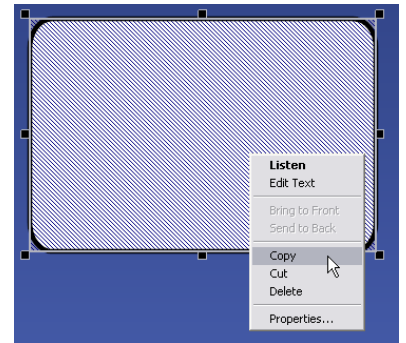




- Click on the **“Cell Palette”** button on the Editing Tools window.
- Click on a simple cell choice, hold down the mouse button and drag it onto the grid area. Drop it into place.
- Click on the lower right corner **“handler”** to resize the cell so it takes up about $\frac{1}{4}$ of the grid.



- Hold down **“Control”** on your keyboard and *left click* on the cell to select it. *Right-click* on the cell to pull up the context menu and select **“Copy”**. You have now copied that cell to your computer’s clipboard.
- Put your cursor anywhere else on the grid and *right click*. Another context menu comes up. Select **“Paste”**. You should have something that looks like this:



- Close the Cell Palette window by clicking the **“Close”** button.

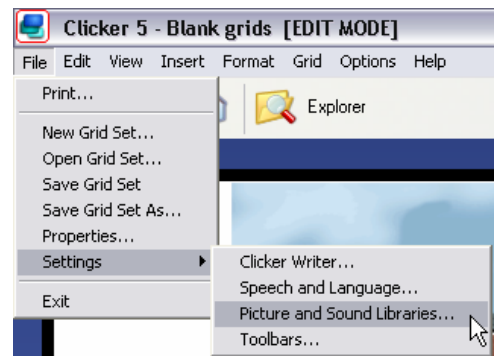
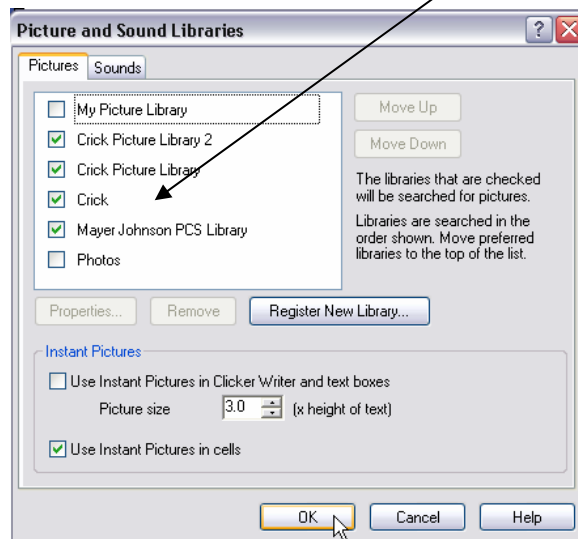
Adding Text and Pictures to the Cells

The next step is to add the text and pictures to the cells so your student will know which cell starts which activity. For this tutorial, the cells will link to the following example Grid Sets:

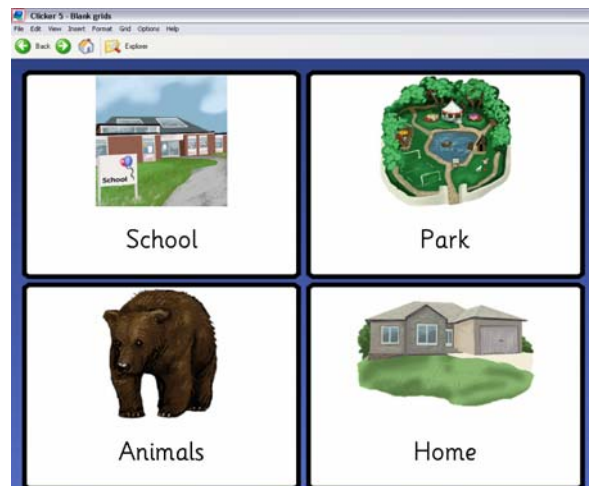
- Language Arts – At School Write
 - Language Arts – In the Park Sentences
 - Science – All About Animals Write
 - Geography – All Types of Homes Write
- a. “Shift” – *left click* in the first cell to add the text “**School**”. Click “**Enter**” and a picture of a school should appear in the cell with the text.

NOTE: If a picture does not appear in the cell when you click “Enter” you may not have any of the picture libraries selected. If this is the case, go to the “**File**” menu and select “**Settings – Picture and Sound Libraries**”

In the window that opens, make sure you have the picture libraries you would like to use selected.



- b. “Shift” – *left click* in the other three cells to add the text and pictures for “**Park**”, “**Bear**” and “**House**”.
- c. Once the pictures for the last two go in, you will have to “Shift” – *left click* again on the cells to change the text to something that matches the activities more – “**Bear**” goes to “**Animals**” and “**House**” goes to “**Home**”. You should end up with a grid that looks like this:



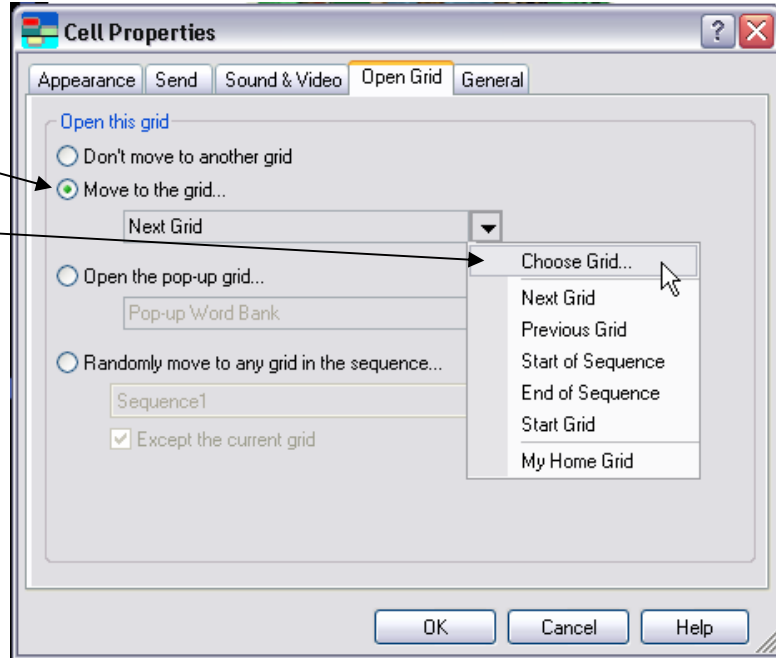
Linking the Home Grid Cells to the Grid Activities

Now we have to link the cells on the grid so they will open the corresponding Clicker grid writing activities.

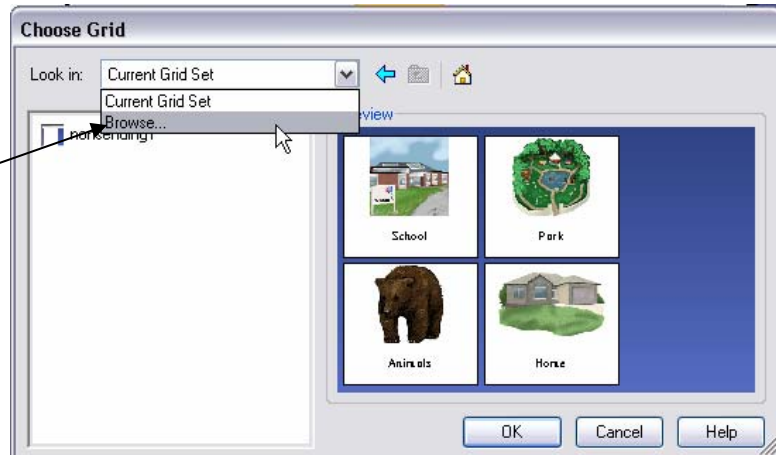
- a. “Shift” – *right click* on the “School” cell to open “**Cell Properties**”. Under the “Open Grid” tab, you can select which grid you want to open when that cell is clicked.

Click on the “**Move to the grid..**” radio button.

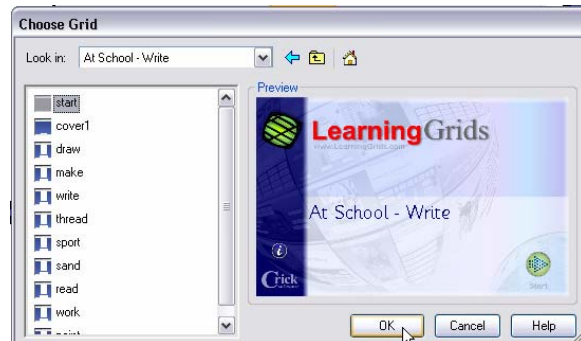
Click on the grid drop down menu and select “**Choose Grid**”.



- b. In the “**Choose Grid**” window that opens up, click on the “**Look in:**” drop down menu and select “**Browse...**”. You are going to go find the *Language Arts – At School Write* grid set.



- c. In the “Open” window, *double-click* to open the “**Examples**” folder, *double-click* to open the “**Language Arts**” folder and *double-click* to open the “**At School Write**” activity. Click “**OK**” to exit the window.

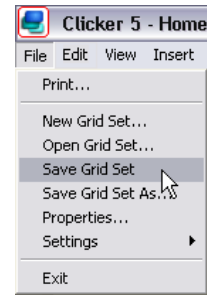


- d. Click **“OK”** to close the **“Cell Properties”** window.
- e. Repeat steps a – d for each of the other cells, linking the appropriate grids to each cell.

Saving the Home Grid

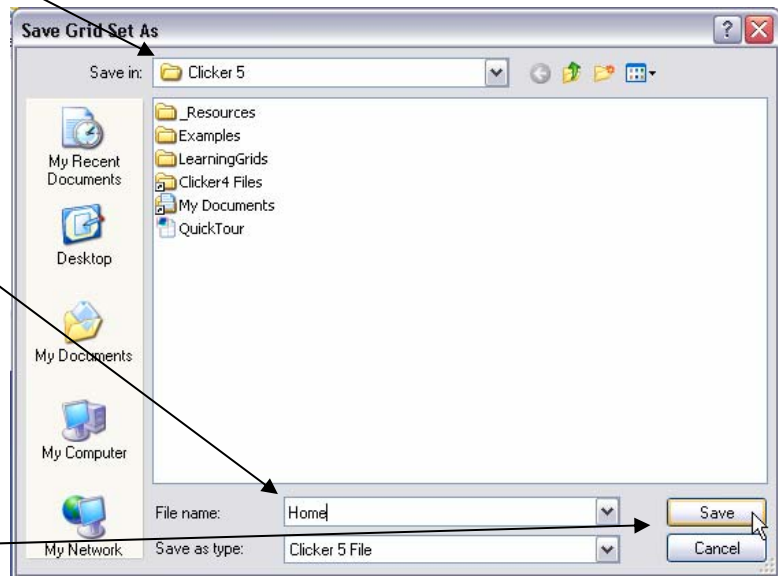
The secret to having this grid act as the Home grid is to save it with the name **“Home”** in the **“Shared Documents”** folder.

- a. Go to **“File”** and select **“Save Grid Set”**.
- b. In the **“Save in:”** field make sure you will be saving in the **“Clicker 5”** folder (this is the **“Shared Documents”** folder).



In the **“File name:”** field, name your grid set **“Home”**.

Click **“Save”**.



- c. Close Clicker 5 by clicking in the red close box in the upper right corner of the window. Relaunch the program and you should see your new Home grid open up. By clicking on the cells your student can launch the individual grid sets.

Please view or download the other Clicker 5 (Windows) tutorials to learn more useful features and applications of the program.